








**LÉGENDE**

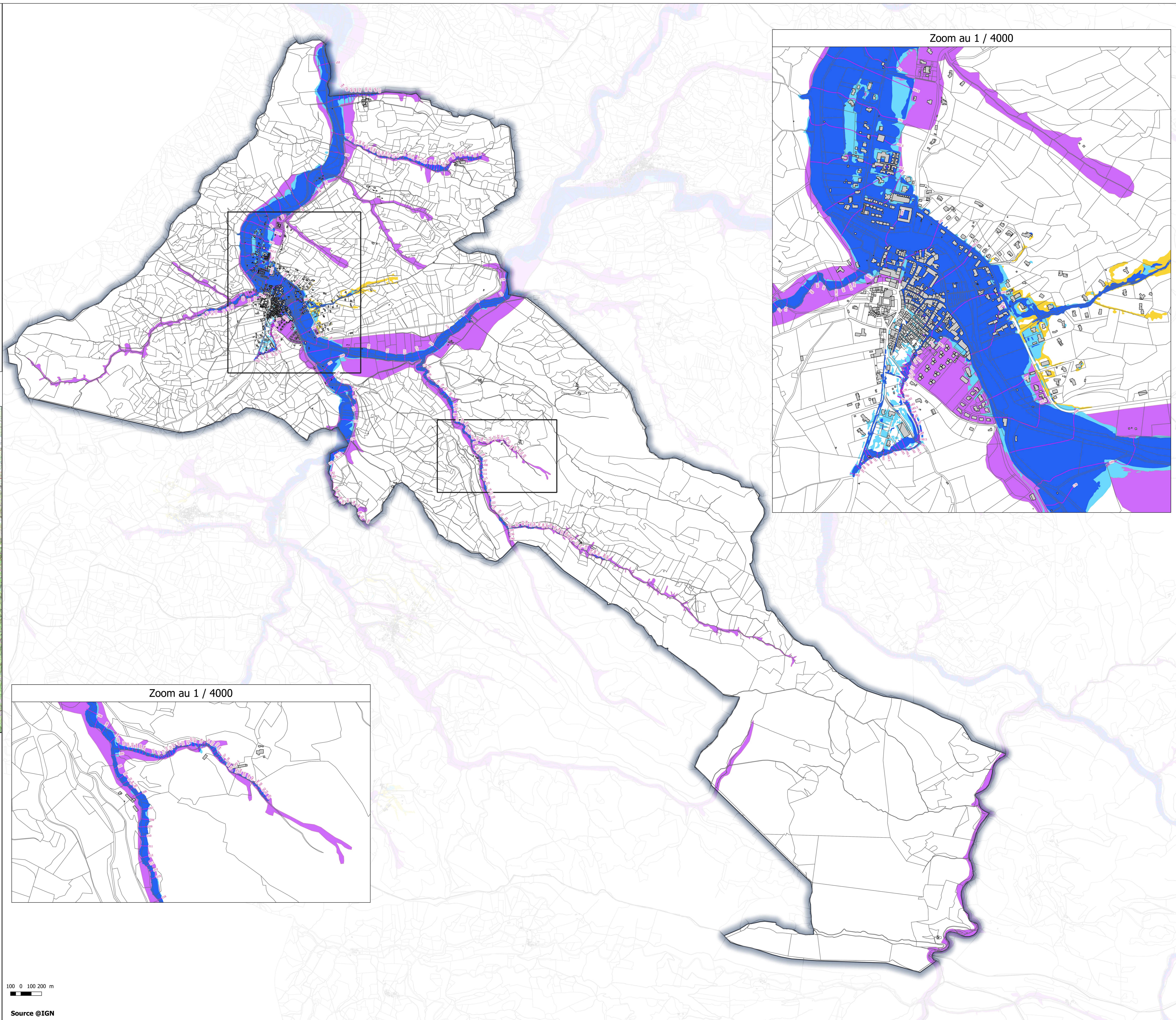
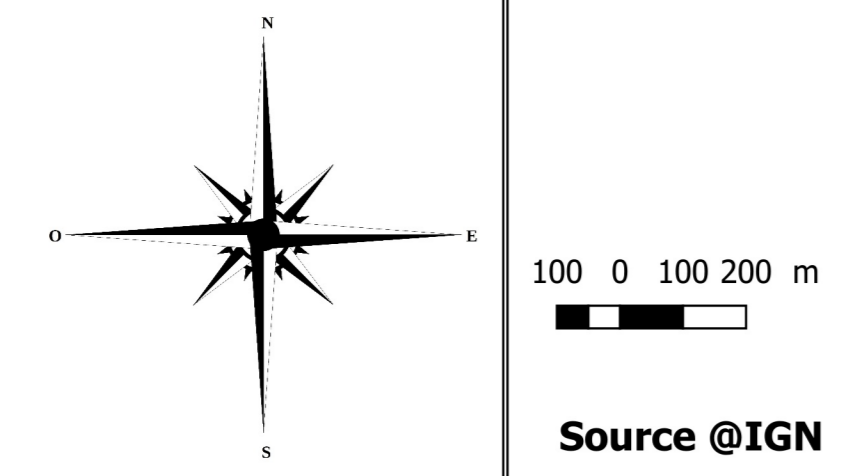
-  Limite communale
-  Bâtiments
-  Niveau d'eau de la crue de référence (mètre NGF)

**Aléa inondation**

-  Fort
-  Modéré
-  Ruissellement Pluvial
-  Zone inondable par hydrogeomorphologie

|                      |               | Débordement |             |
|----------------------|---------------|-------------|-------------|
| Vitesse d'écoulement | Hauteur d'eau | h < 0,5 m   | ≥ 0,5 m     |
|                      | < 0,5 m/s     |             | Aléa modéré |
| ≥ 0,5 m/s            |               | Aléa fort   | Aléa fort   |

|                      |           | Ruissellement |                 |             |
|----------------------|-----------|---------------|-----------------|-------------|
| Vitesse d'écoulement | Hauteur   | < 0,1 m       | 0,1 < h < 0,5 m | ≥ 0,5 m     |
|                      | < 0,5 m/s |               | Aléa faible     | Aléa modéré |
| ≥ 0,5 m/s            |           | Aléa faible   | Aléa fort       | Aléa fort   |

100 0 100 200 m

Source @IGN