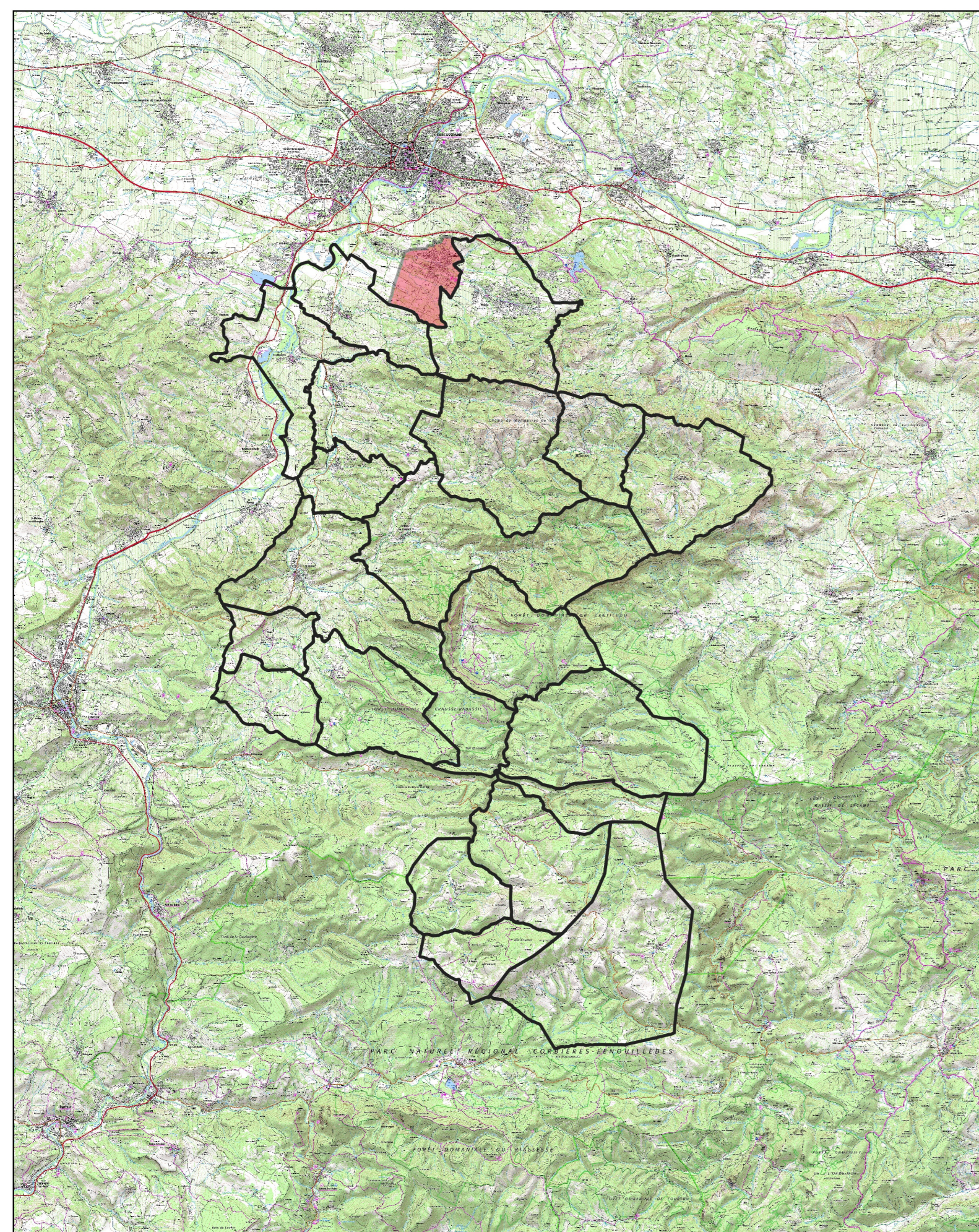









**PLAN DE SITUATION**



**LÉGENDE**

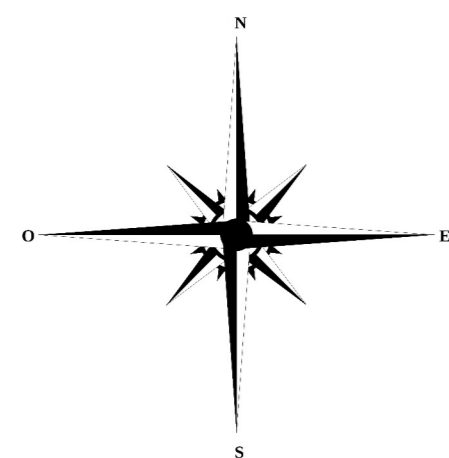
-  Limite communale
-  Bâtiments
-  Niveau d'eau de la crue de référence (mètre NGF)

**Aléa inondation**

-  Fort
-  Modéré
-  Ruissellement Pluvial
-  Zone inondable par hydrogeomorphologie

		Débordement	
Vitesse d'écoulement	Hauteur d'eau	$h < 0,5$ m	$\geq 0,5$ m
	$< 0,5$ m/s		Aléa modéré
$\geq 0,5$ m/s		Aléa fort	Aléa fort

		Ruissellement		
Vitesse d'écoulement	Hauteur d'eau	$< 0,1$ m	$0,1 \leq h < 0,5$ m	$\geq 0,5$ m
	$< 0,5$ m/s		Aléa faible	Aléa modéré
$\geq 0,5$ m/s		Aléa faible	Aléa fort	Aléa fort



Source @IGN

