

COMMUNE DE VILLEMUSTAUSOU

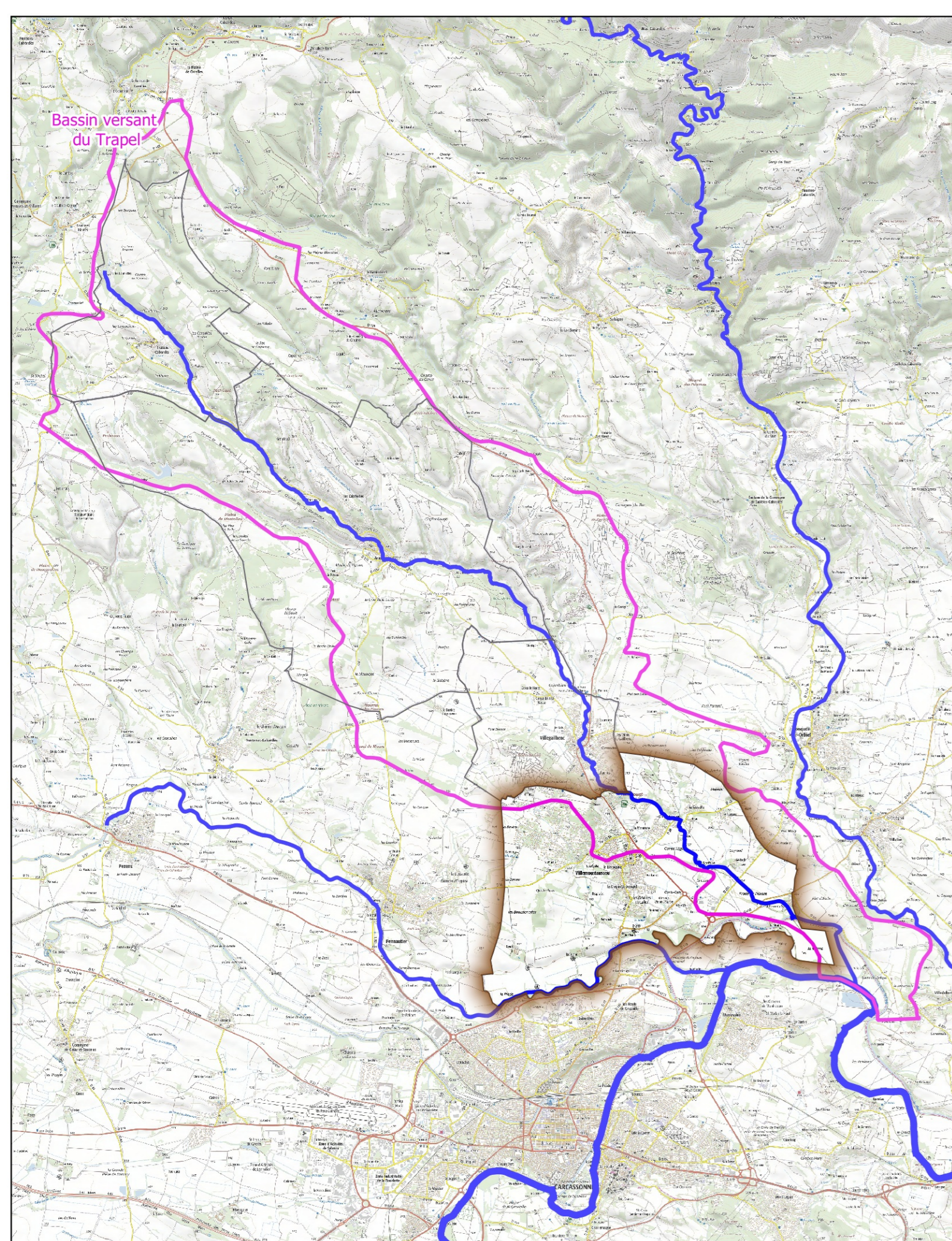
Porter à connaissance

CARTE DES ALÉAS INONDATION








Echelle : 1 / 6000

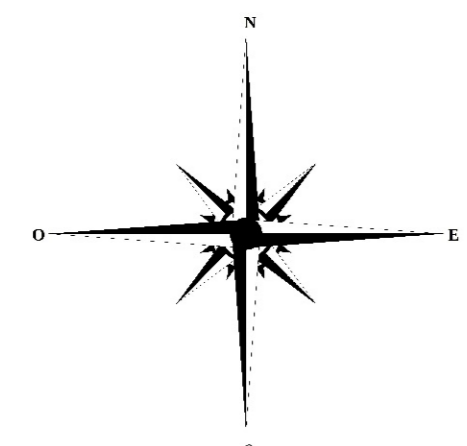
Décembre 2022

PLANCHE N° 1  
(plan de situation)



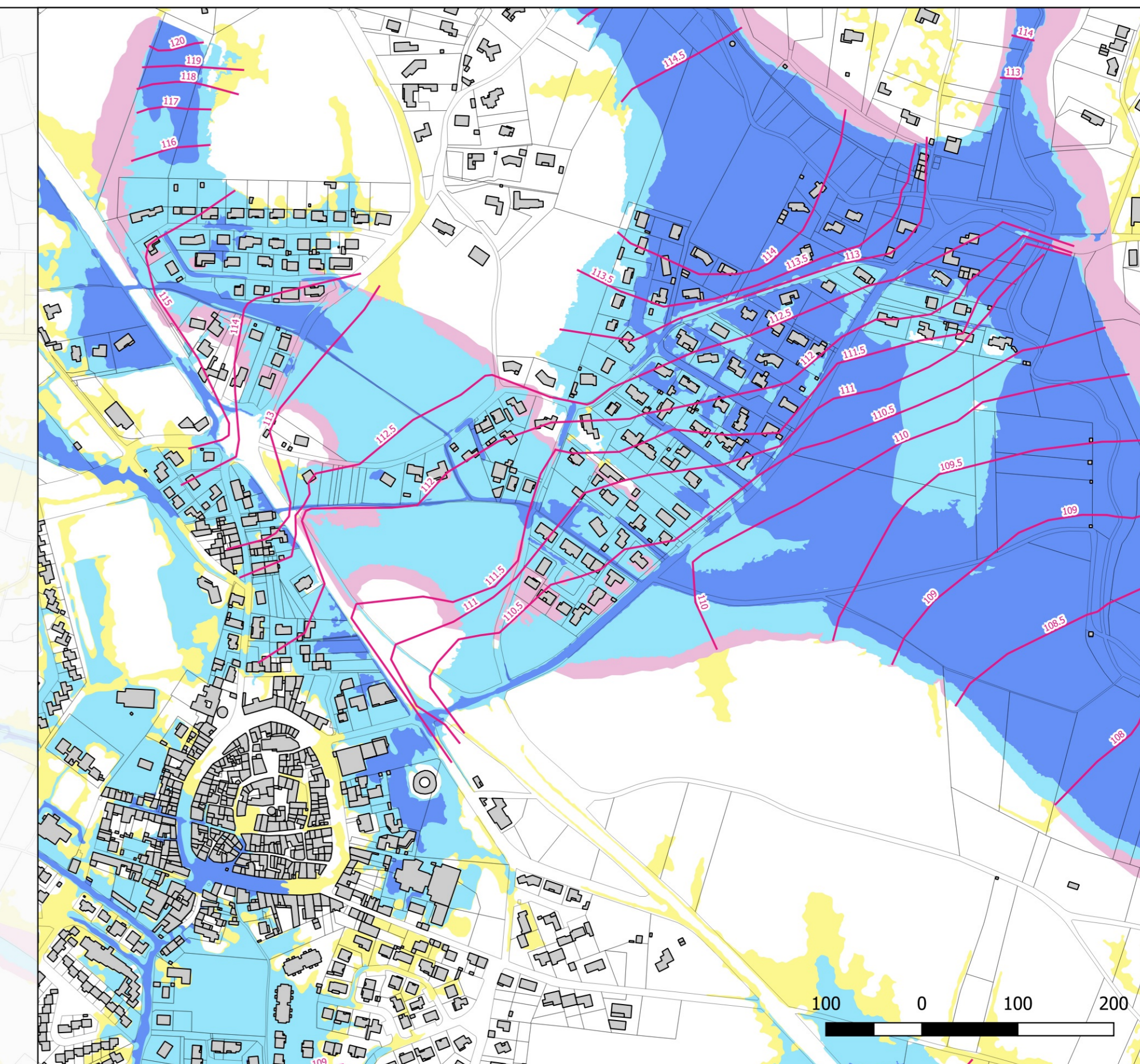
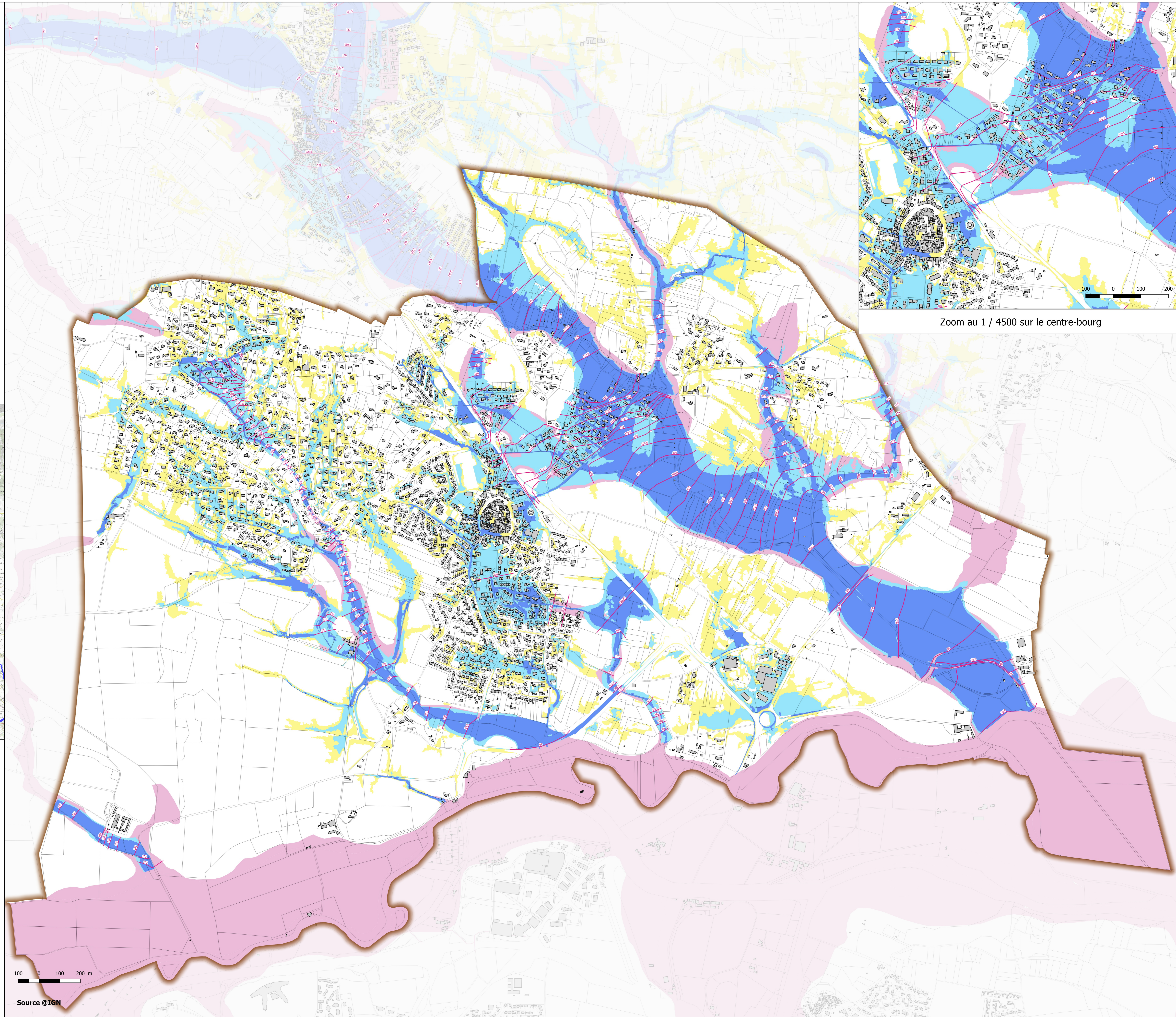
LÉGENDE

-  Limite communale
-  Bâtiments
- Aléas**
-  Aléa fort
-  Aléa modéré
-  Zone inondable par hydrogéomorphologie
-  Aléa faible (ruissellement)
-  Niveau d'eau de la crue de référence (mètre NGF)



100 0 100 200 m

Source @IGN



Zoom au 1 / 4500 sur le centre-bourg