








Légende



Hydrogéomorphologie

-  Axe d'écoulement
-  Champ majeur
-  Élément anthropique structurant
-  Axe de ruissellement
-  Limite communale
-  Parcelle
-  Bâtiment

Emprise des zones inondables

-  2002

Niveau des plus hautes eau ou repère de crue :

-  1634
-  1780
-  1789
-  2002
-  2014

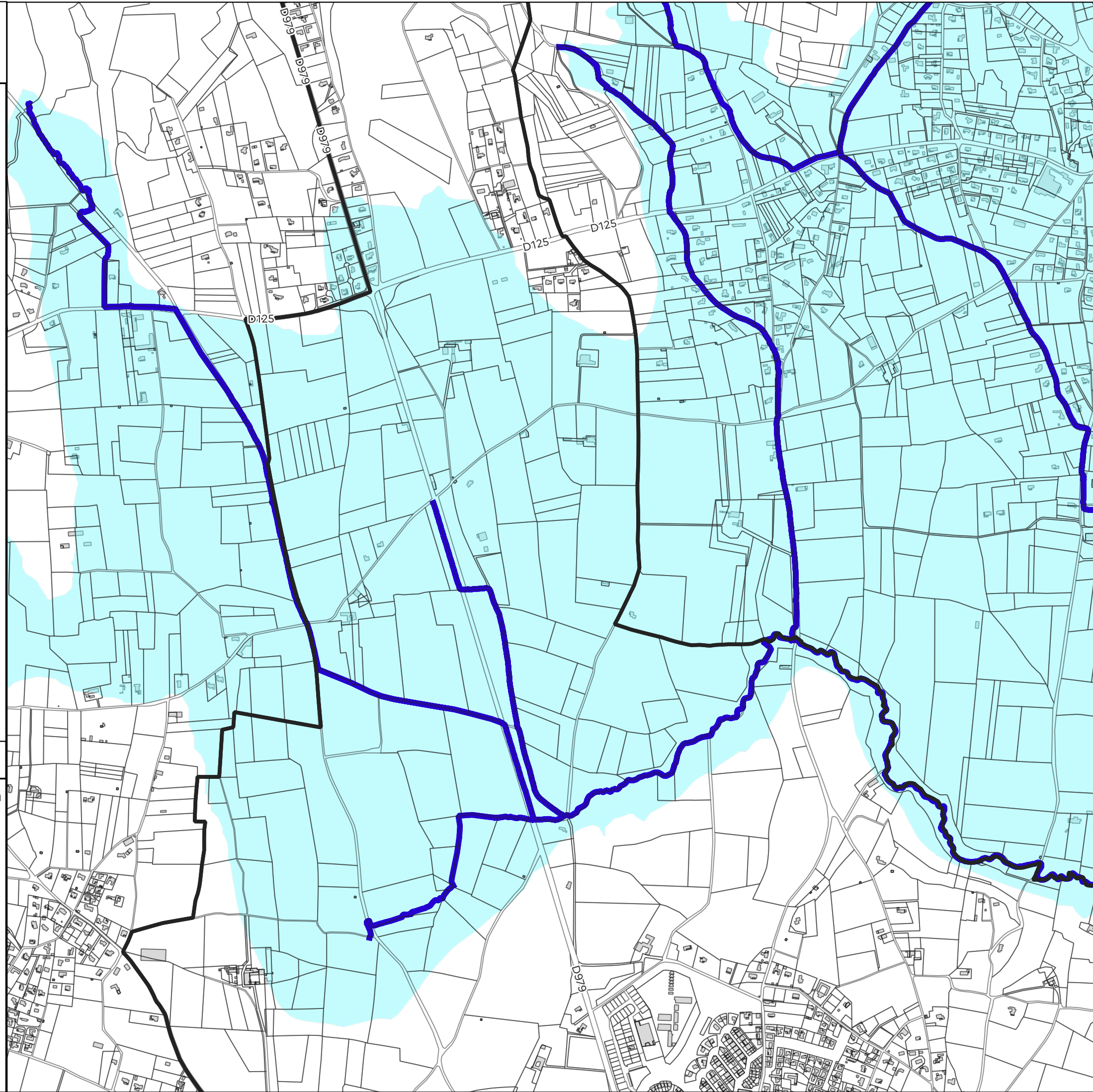
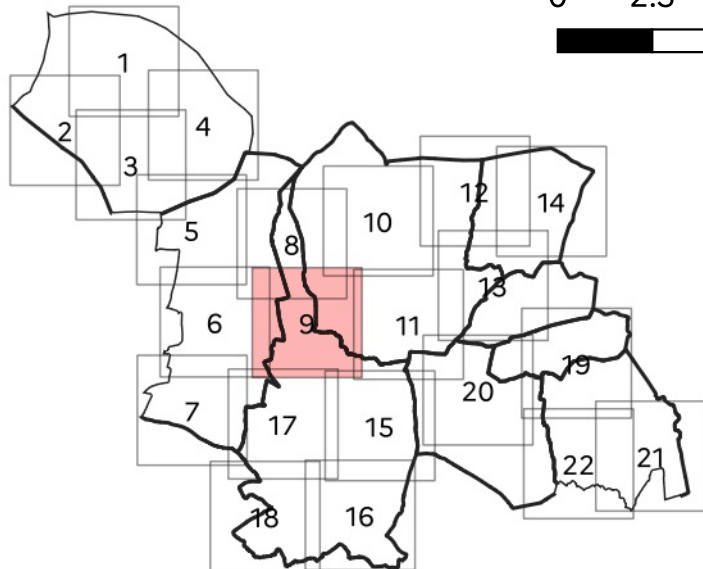
Echelle : 1/10000 ème

0 100 200 300 m



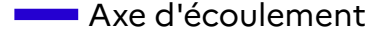






Bassin-versant Alzon-Seynes

0 2.5 5 km



Légende

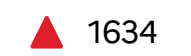
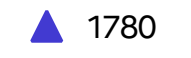
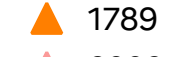
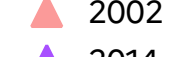
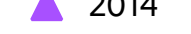
Hydrogéomorphologie

-  Axe d'écoulement
-  Champ majeur
-  Élément anthropique structurant
-  Axe de ruissellement
-  Limite communale
-  Parcelle
-  Bâtiment

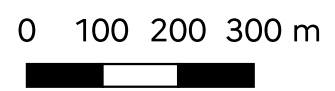
Emprise des zones inondables

-  2002

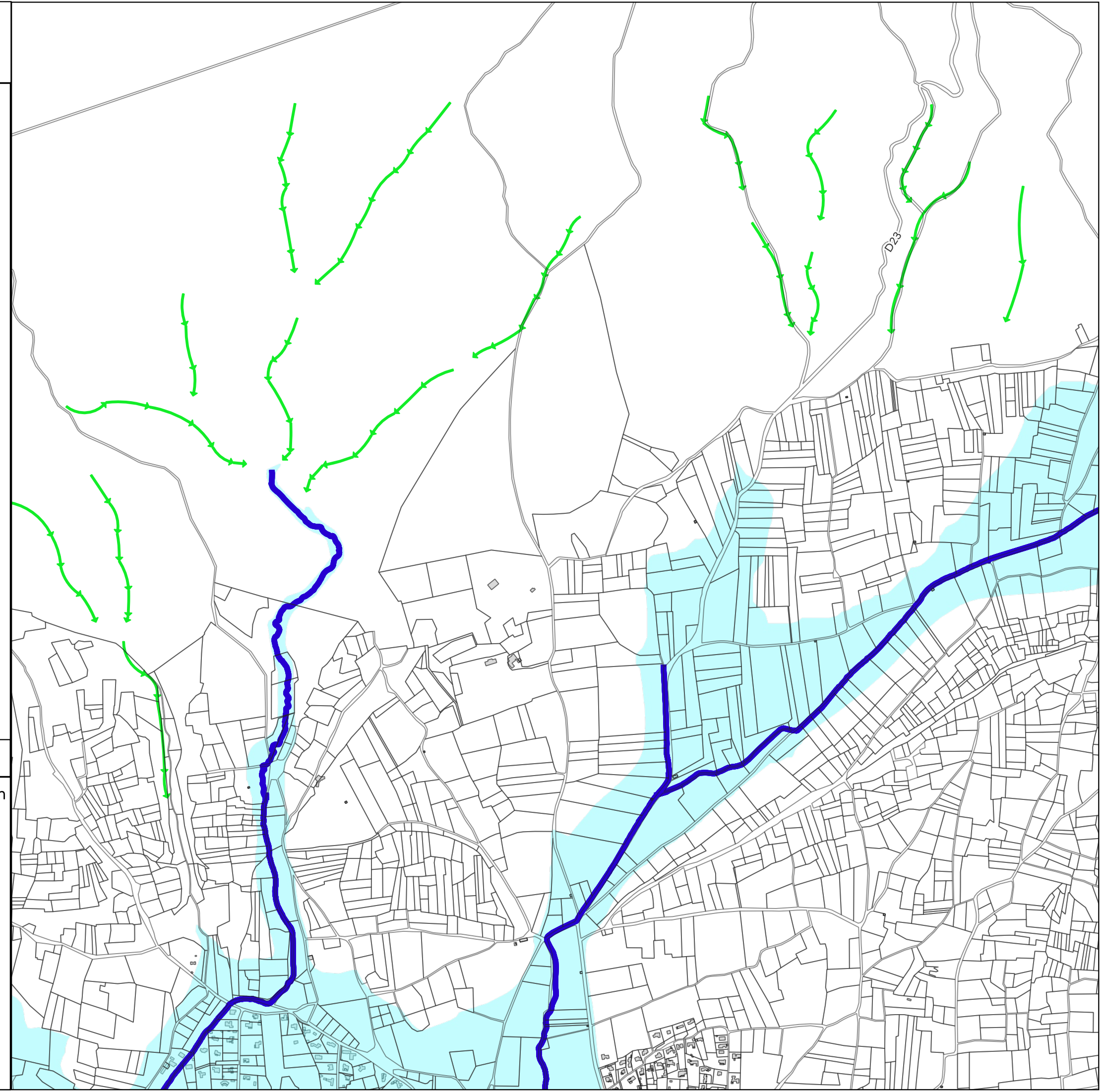
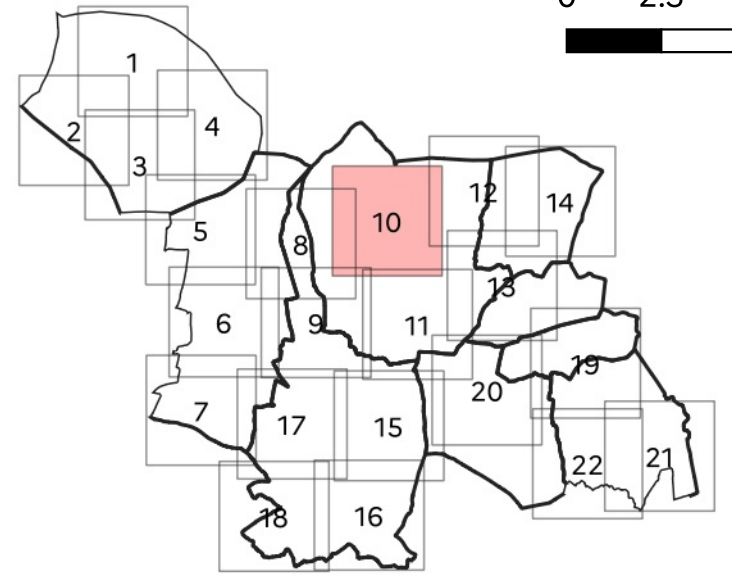
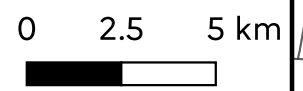
Niveau des plus hautes eaux ou repère de crue :

-  1634
-  1780
-  1789
-  2002
-  2014

Echelle : 1/10000 ème



Bassin-versant Alzon-Seynes



Légende

Hydrogéomorphologie

- Axe d'écoulement
- Champ majeur
- Elément anthropique structurant
- > Axe de ruissellement
- Limite communale
- Parcelle
- Bâtiment

Emprise des zones inondables

- 2002

Niveau des plus hautes eaux ou repère de crue :

- ▲ 1634
- ▲ 1780
- ▲ 1789
- ▲ 2002
- ▲ 2014

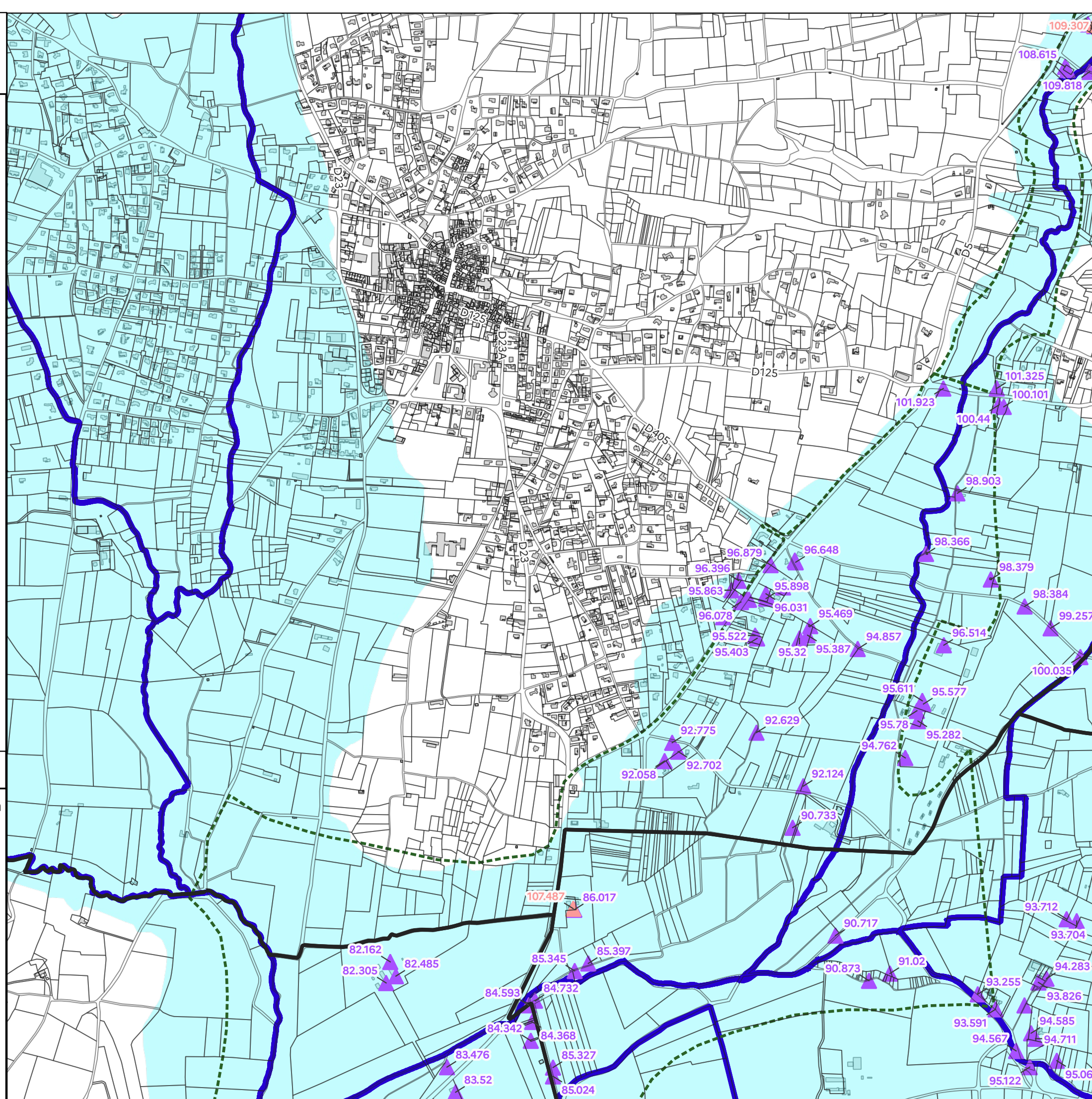
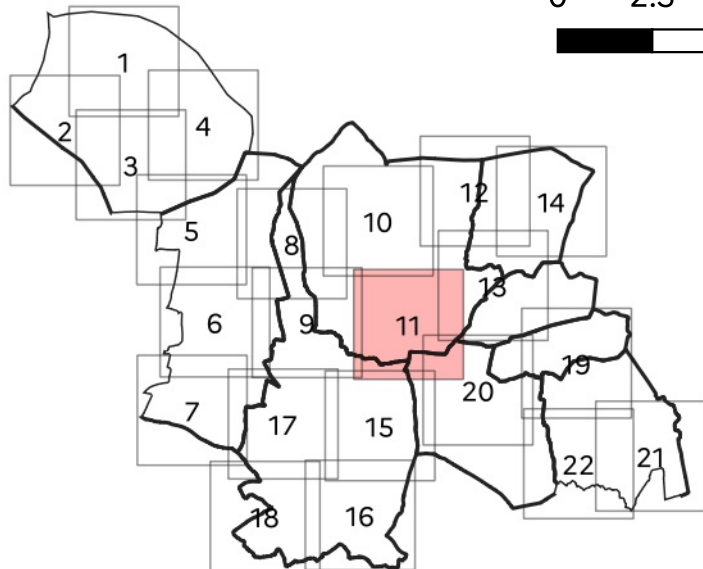
Echelle : 1/10000 ème

0 100 200 300 m



Bassin-versant Alzon-Seynes

0 2.5 5 km



Légende

Hydrogéomorphologie

- Axe d'écoulement
- Champ majeur
- Elément anthropique structurant
- Axe de ruissellement
- Limite communale
- Parcelle
- Bâtiment

Emprise des zones inondables

- 2002

Niveau des plus hautes eau ou repère de crue :

- 1634
- 1780
- 1789
- 2002
- 2014

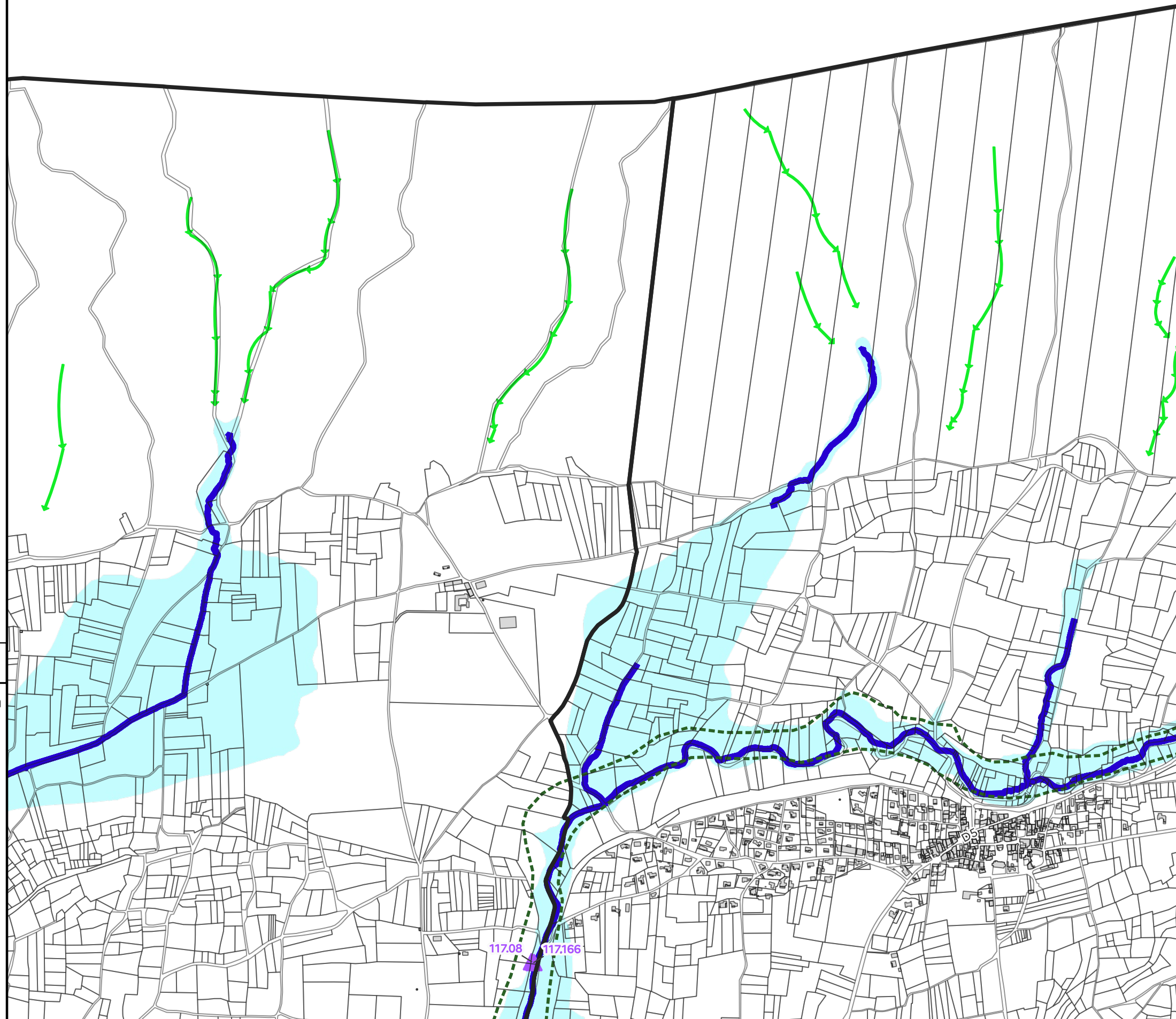
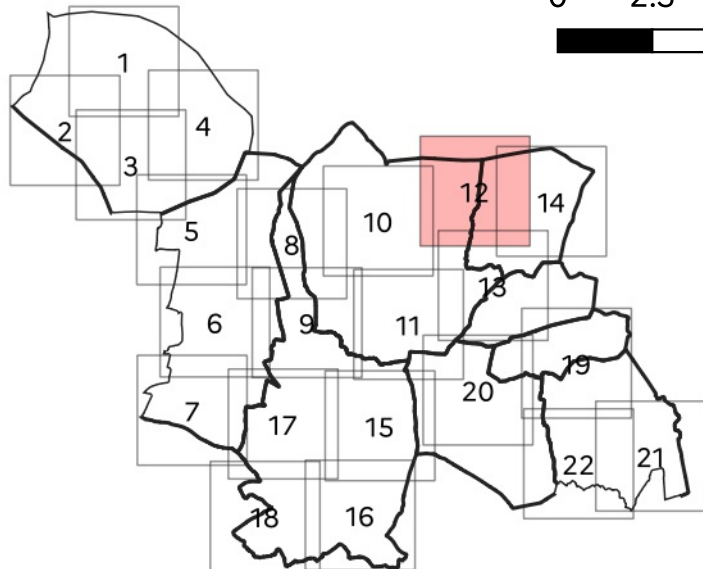
Echelle : 1/10000 ème

0 100 200 300 m





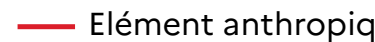

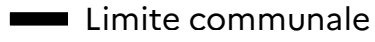

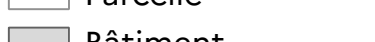
Bassin-versant Alzon-Seynes

0 2.5 5 km



Légende


Hydrogéomorphologie

-  Axe d'écoulement
-  Champ majeur
-  Elément anthropique structurant
-  Axe de ruissellement
-  Limite communale
-  Parcelle
-  Bâtiment

Emprise des zones inondables

-  2002

Niveau des plus hautes eau ou repère de crue :

-  1634
-  1780
-  1789
-  2002
-  2014

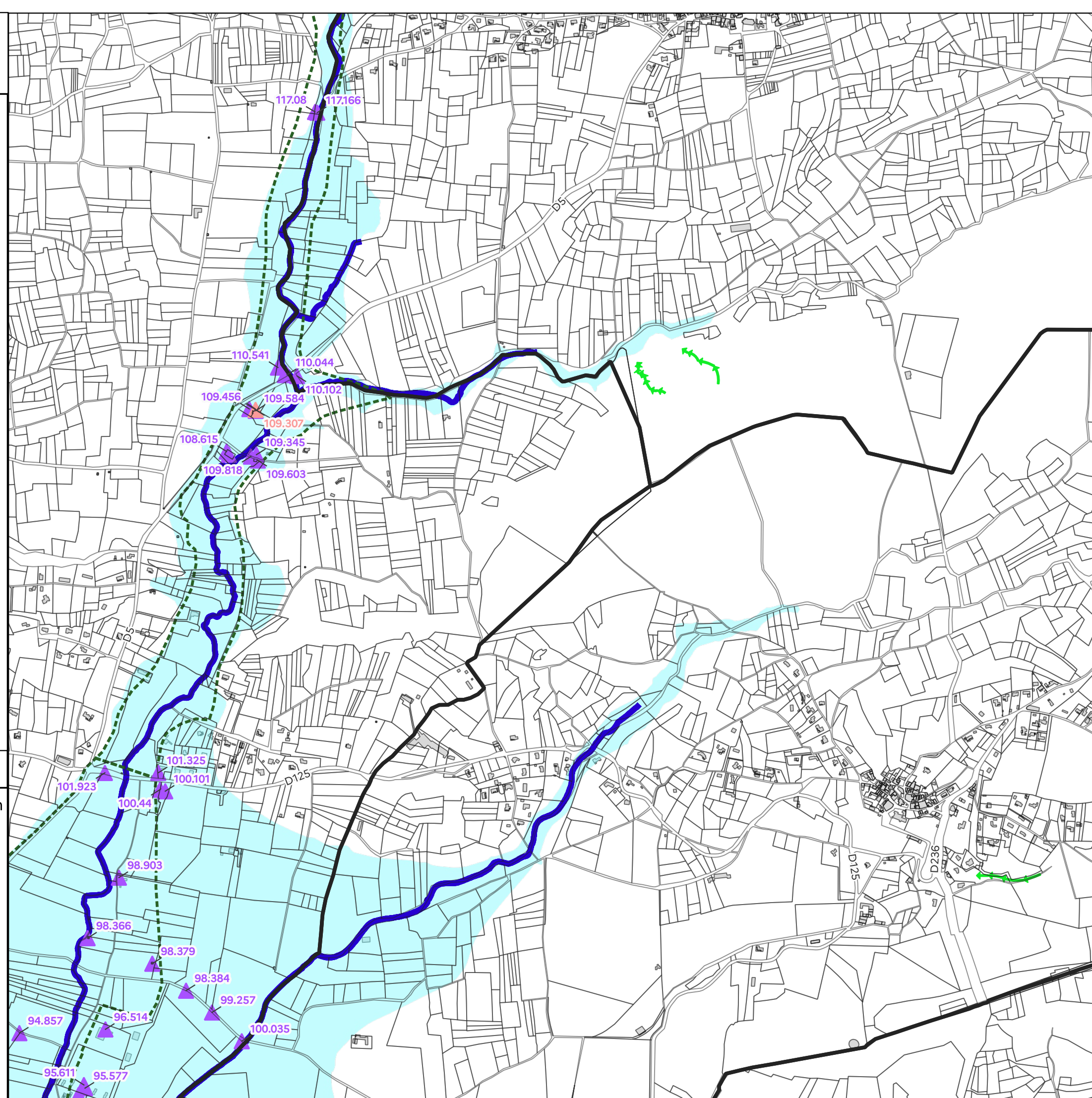
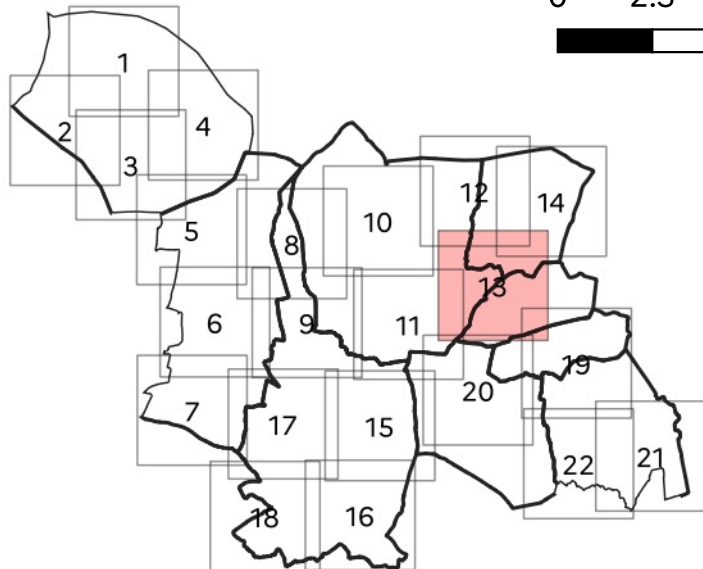
Echelle : 1/10000 ème

0 100 200 300 m



Bassin-versant Alzon-Seynes

0 2.5 5 km



Légende

Hydrogéomorphologie

- Axe d'écoulement
- Champ majeur
- Élément anthropique structurant
- Axe de ruissellement
- Limite communale
- Parcelle
- Bâtiment

Emprise des zones inondables

- 2002

Niveau des plus hautes eau ou repère de crue :

- 1634
- 1780
- 1789
- 2002
- 2014

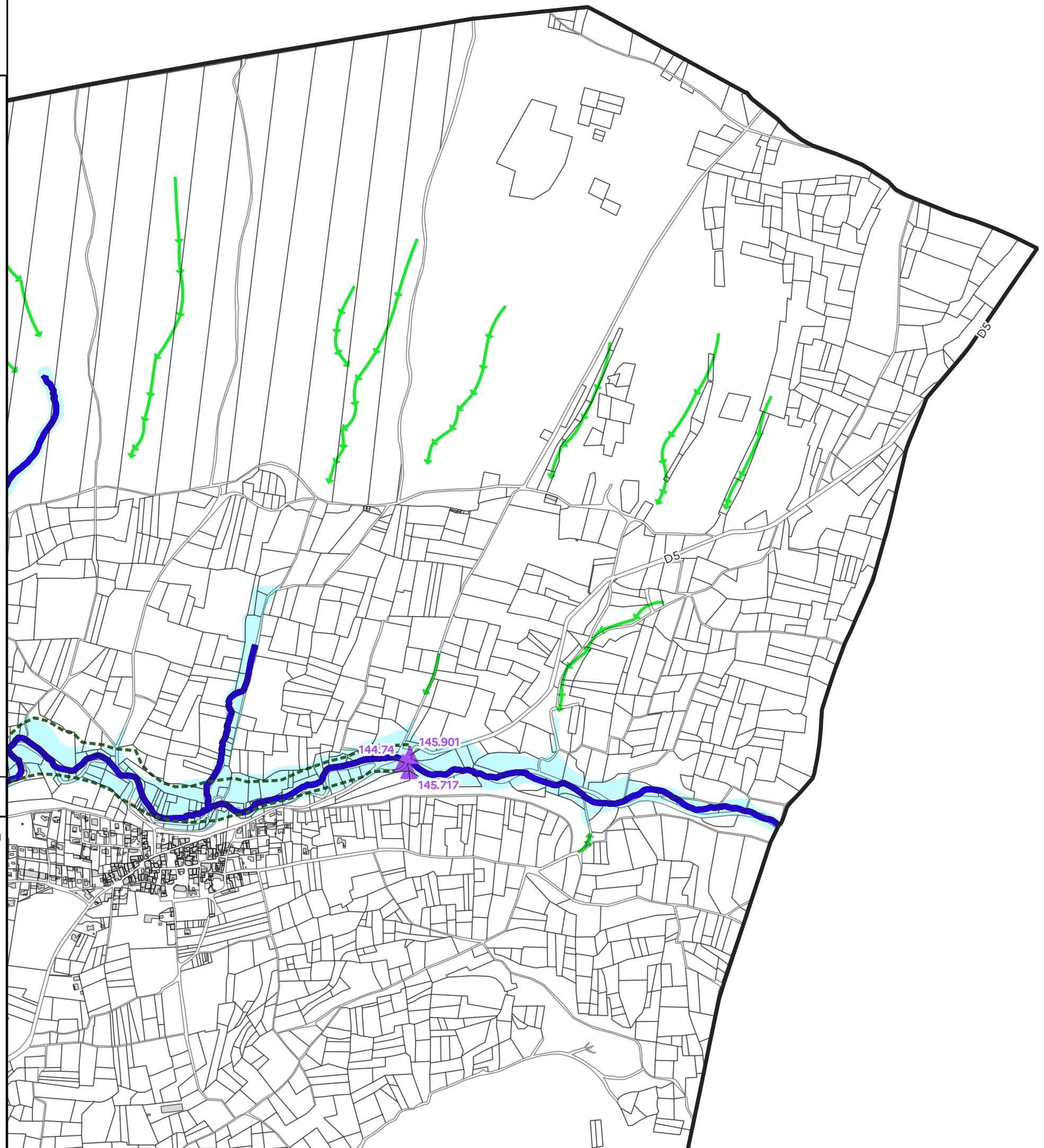
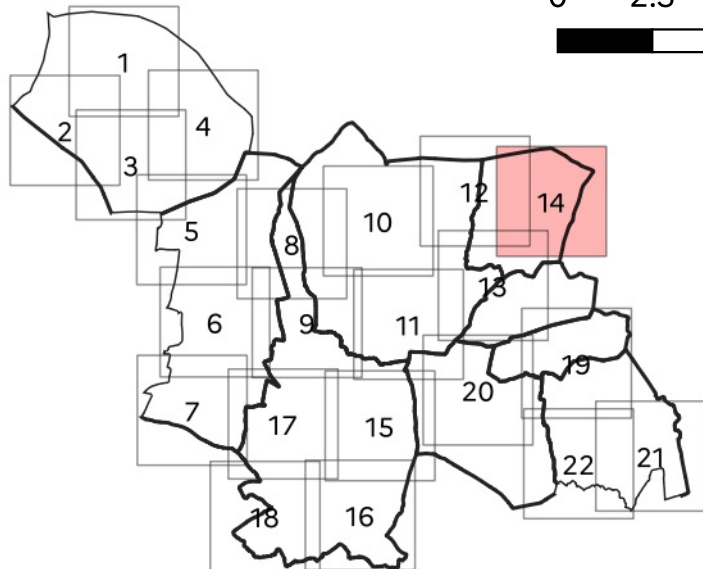
Echelle : 1/10000 ème

0 100 200 300 m



Bassin-versant Alzon-Seynes

0 2.5 5 km



Légende

Hydrogéomorphologie

- Axe d'écoulement
- Champ majeur
- Élément anthropique structurant
- Axe de ruissellement
- Limite communale
- Parcelle
- Bâtiment

Emprise des zones inondables

- 2002

Niveau des plus hautes eau ou repère de crue :

- 1634
- 1780
- 1789
- 2002
- 2014

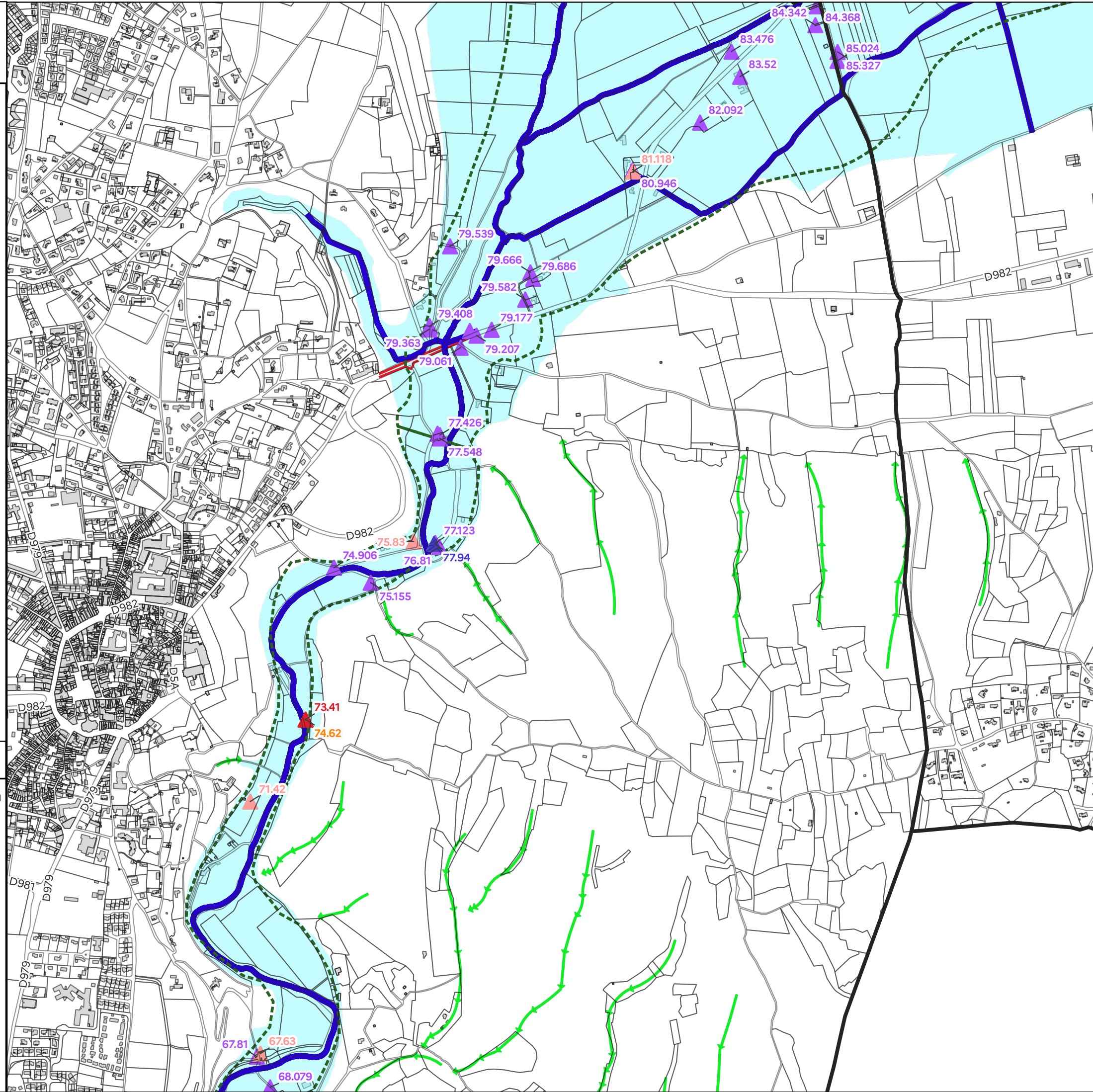
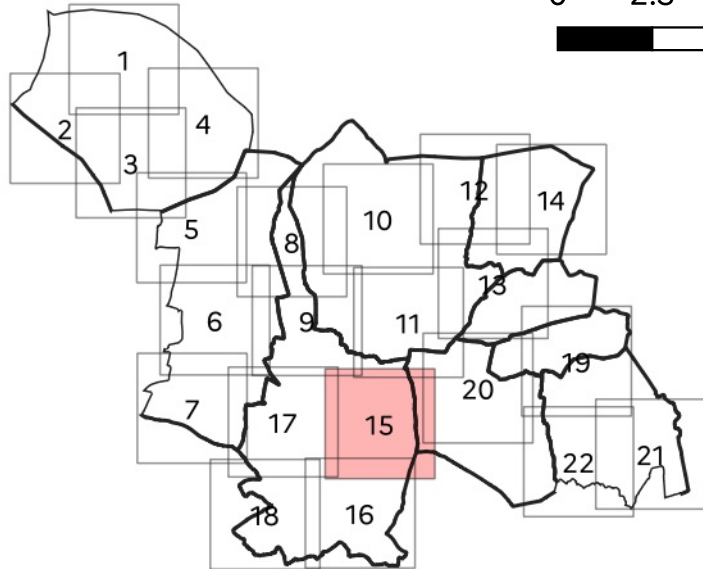
Echelle : 1/10000 ème

0 100 200 300 m



Bassin-versant Alzon-Seynes

0 2.5 5 km



Légende

Hydrogéomorphologie

- Axe d'écoulement
- Champ majeur
- Élément anthropique structurant
- Axe de ruissellement
- Limite communale
- Parcelle
- Bâtiment

Emprise des zones inondables

- 2002

Niveau des plus hautes eaux ou repère de crue :

- ▲ 1634
- ▲ 1780
- ▲ 1789
- ▲ 2002
- ▲ 2014

Echelle : 1/10000 ème

0 100 200 300 m



Bassin-versant Alzon-Seynes

0 2.5 5 km

