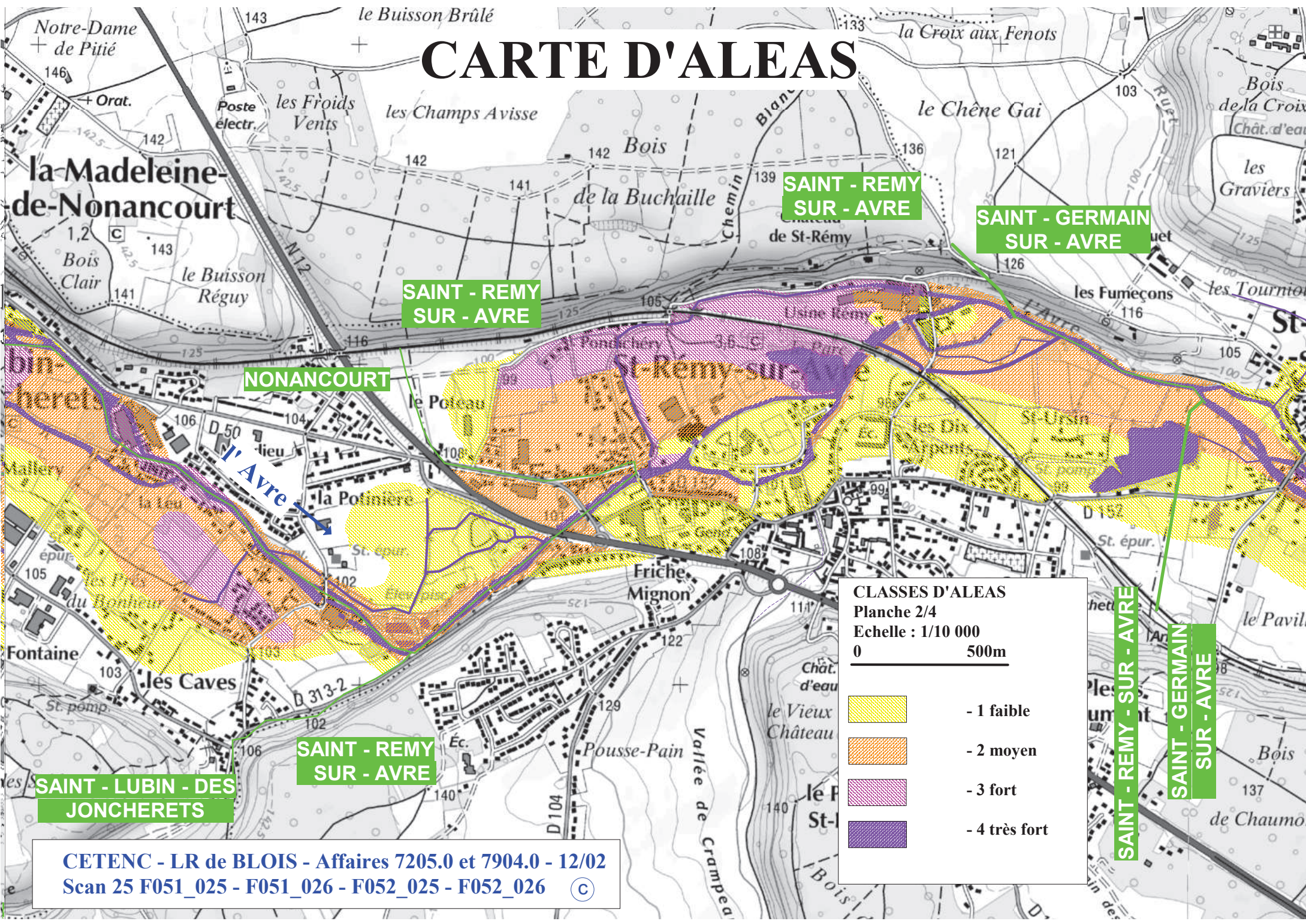


CARTE D'ALEAS



NONANCOURT

SAINT - REMY SUR - AVRE

SAINT - GERMAIN SUR - AVRE

SAINT - REMY SUR - AVRE

bin-herets

Fontaine les Caves





SAINT - LUBIN - DES JONCHERETS

SAINT - REMY SUR - AVRE

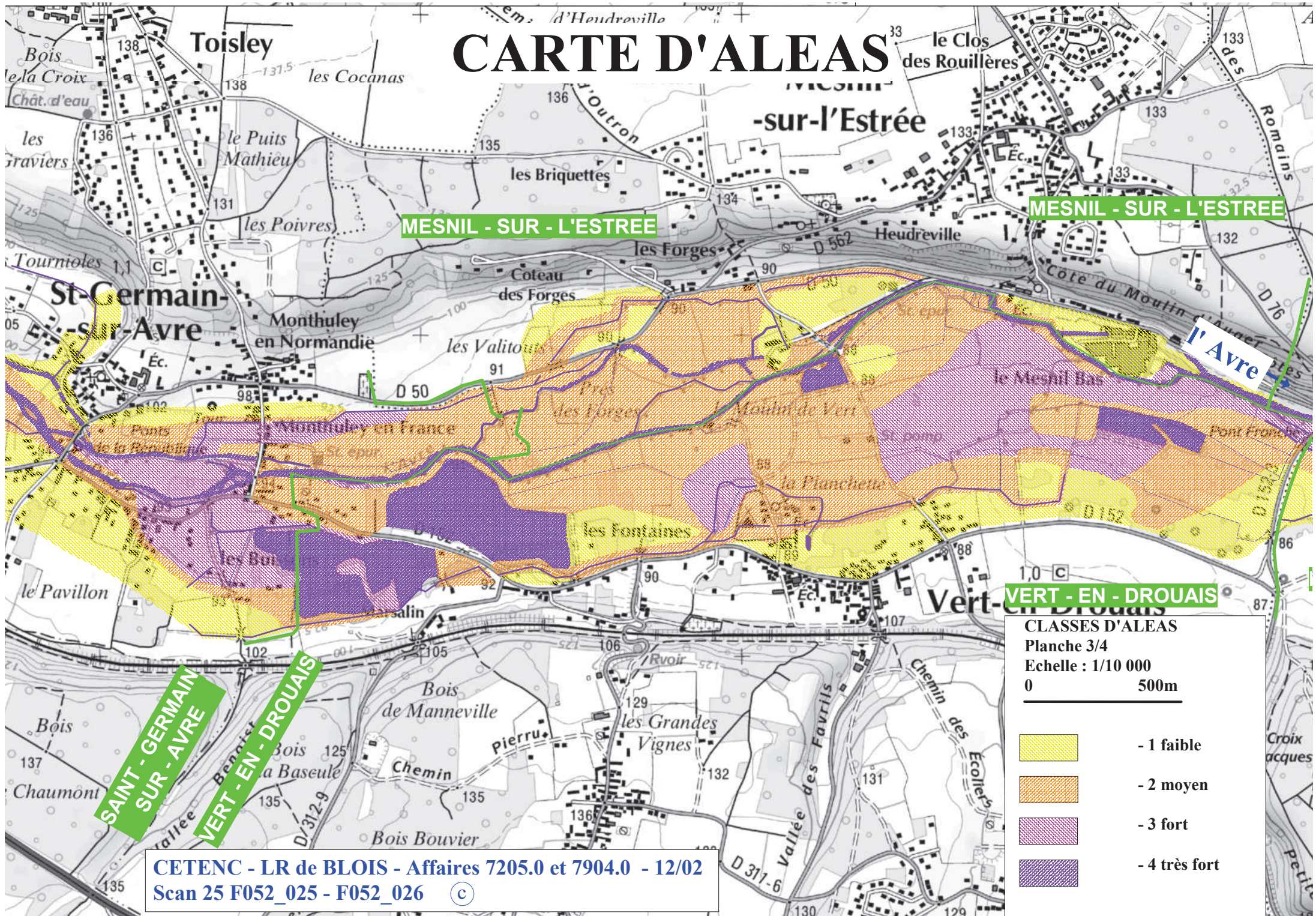
SAINT - REMY - SUR - AVRE

SAINT - GERMAIN SUR - AVRE

CLASSES D'ALEAS
Planche 2/4
Echelle : 1/10 000
0 500m

	- 1 faible
	- 2 moyen
	- 3 fort
	- 4 très fort

CARTE D'ALEAS



MESNIL - SUR - L'ESTREE

MESNIL - SUR - L'ESTREE

l'Avre

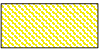



VERT - EN - DROUAIS

SAINTE - GERMAIN
SUR - AVRE

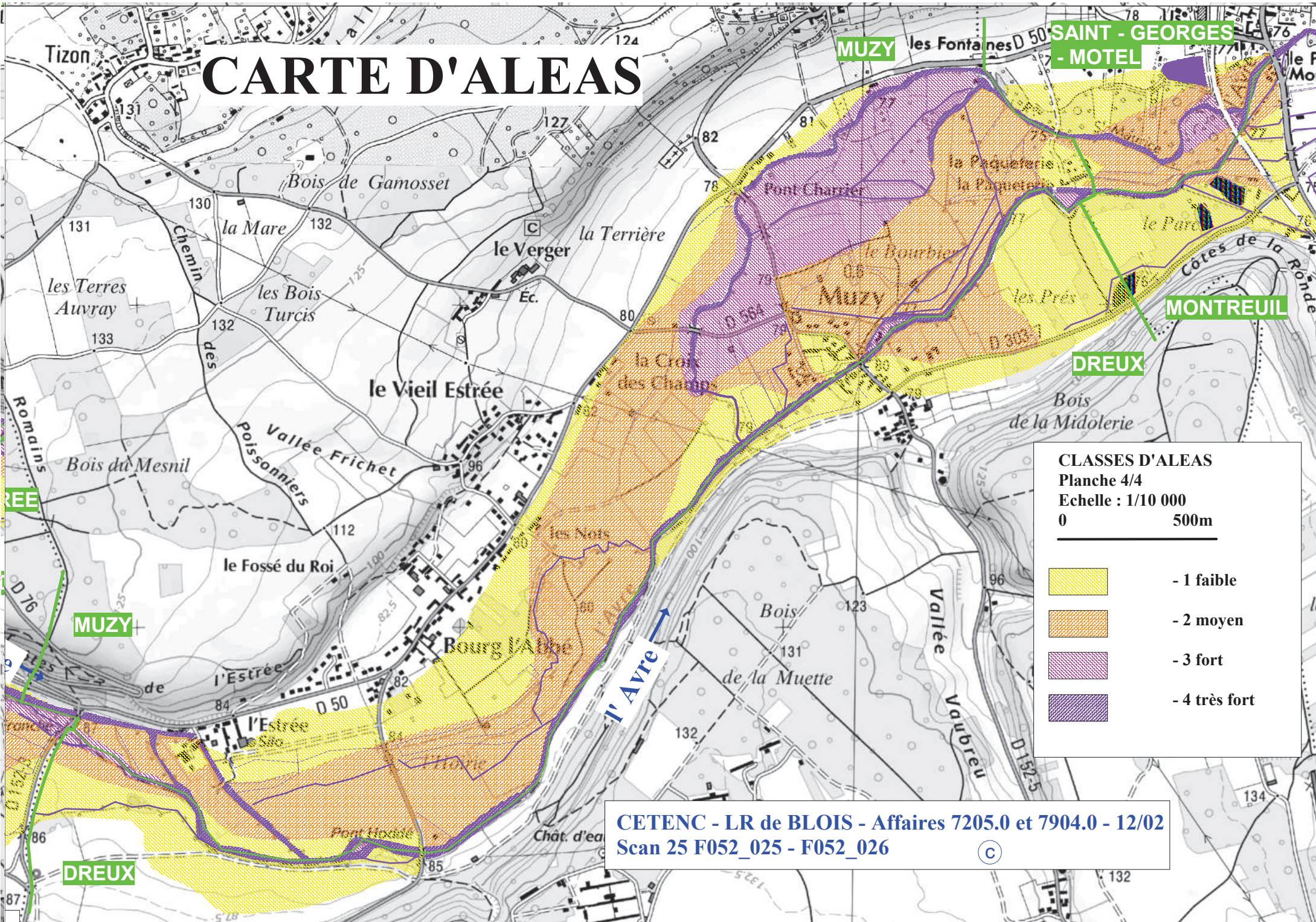
VERT - EN - DROUAIS

CLASSES D'ALEAS
Planche 3/4
Echelle : 1/10 000

0 500m

	- 1 faible
	- 2 moyen
	- 3 fort
	- 4 très fort

CARTE D'ALEAS







CLASSES D'ALEAS

Planche 4/4

Echelle : 1/10 000

0 500m

-  - 1 faible
-  - 2 moyen
-  - 3 fort
-  - 4 très fort

CETENC - LR de BLOIS - Affaires 7205.0 et 7904.0 - 12/02
Scan 25 F052_025 - F052_026

