

Direction Départementale  
des Territoires

Service urbanisme  
et territoires

Prévention des Risques



Préfecture de l'Ardèche

# PLAN DE PREVENTION DES RISQUES D'INONDATION

## Approbation

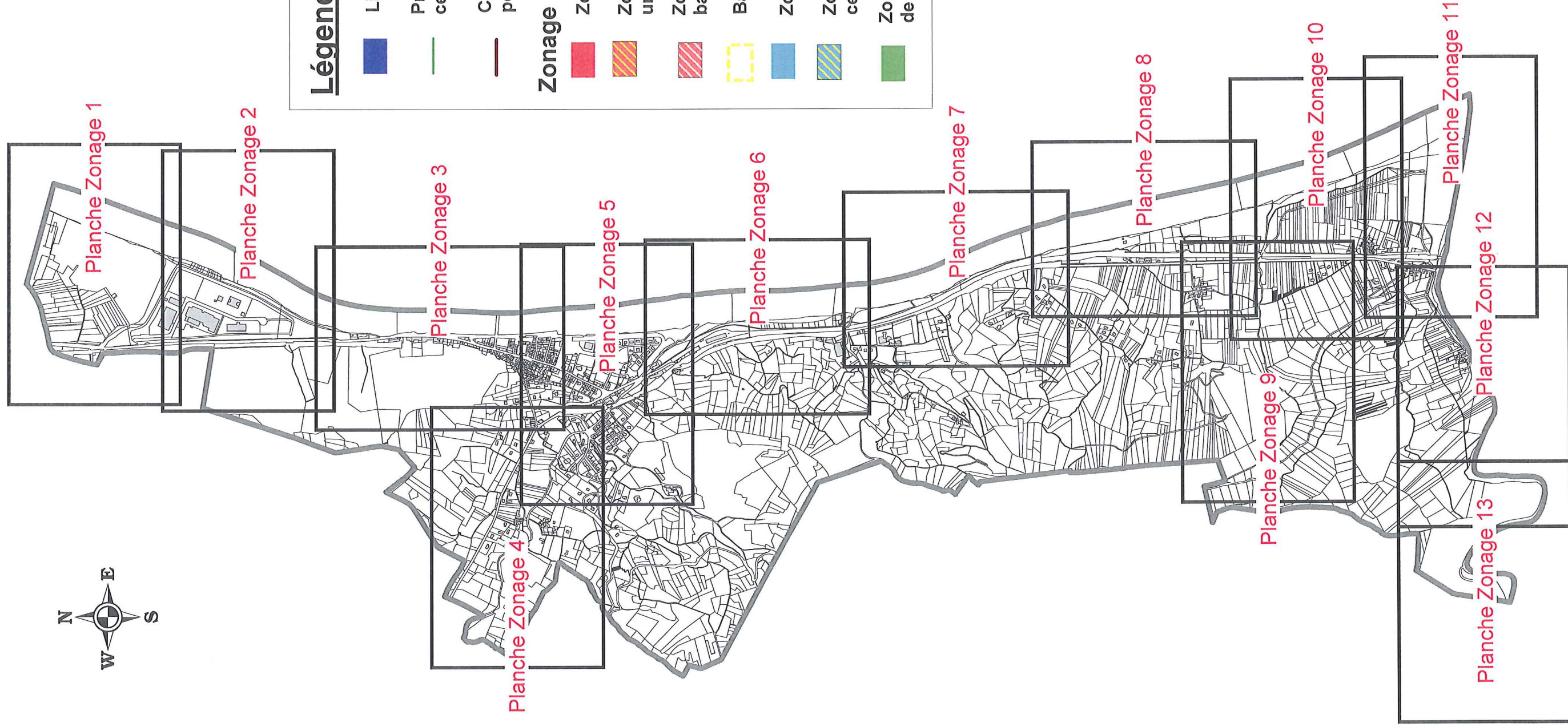
Commune d'Andance

Cartographie du zonage











Atlas cartographique

Numéro d'étude	10CLE050		AGENCE DE LYON Etudes 26, rue de la gare 69009 LYON
Date	Fév. 2013		
Echelle	1 / 2 500		
Chef de Projet	PB		

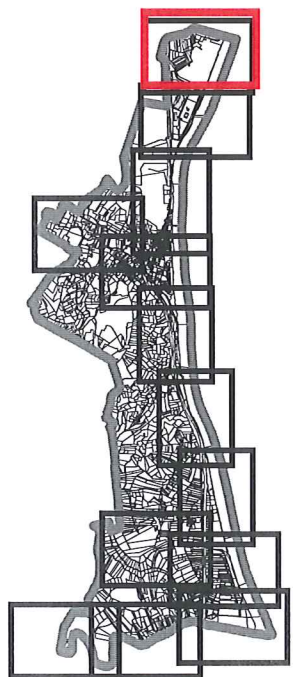
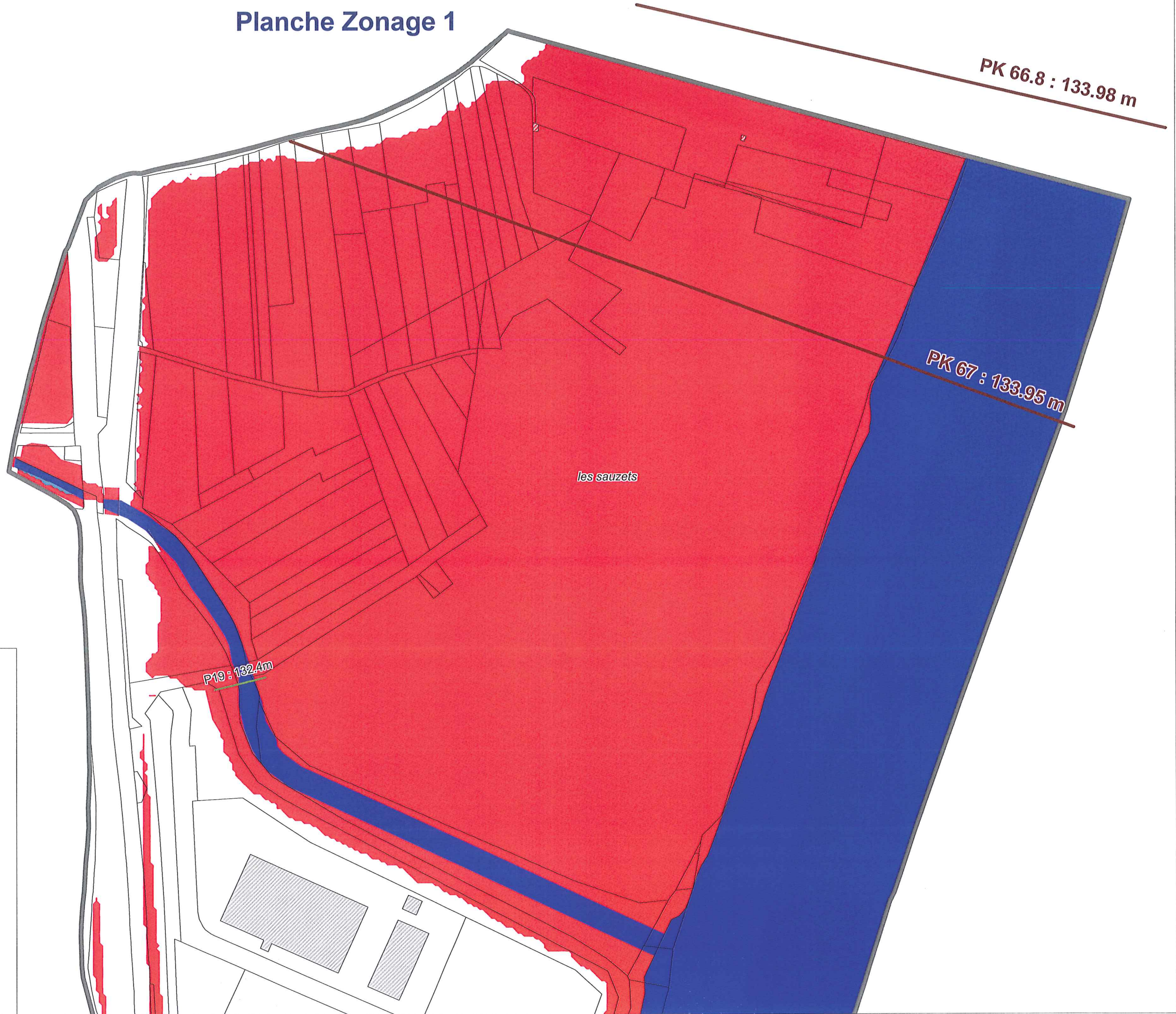
# Localisation des planches de l'atlas cartographiques



## Légende

-  Lit mineur cours d'eau
  -  Profils en travers affluents et cote crue centennale (Q100) aux différents profils
  -  Cote de référence du Rhône aux différents points kilométriques (PK)
- ### Zonage réglementaire
-  Zone R : zone fortement exposée
  -  Zone Rcb : zone fortement exposée en centre urbain
  -  Zone Ra : Secteur réglementé au titre de la bande de sécurité des digues
  -  Bande de sécurité digue
  -  Zone B : zone modérément exposée
  -  Zone Bcb : zone modérément exposée en centre urbain
  -  Zone V : zone soumise aux risques de remontée de nappe et de ruissellement

# Planche Zonage 1

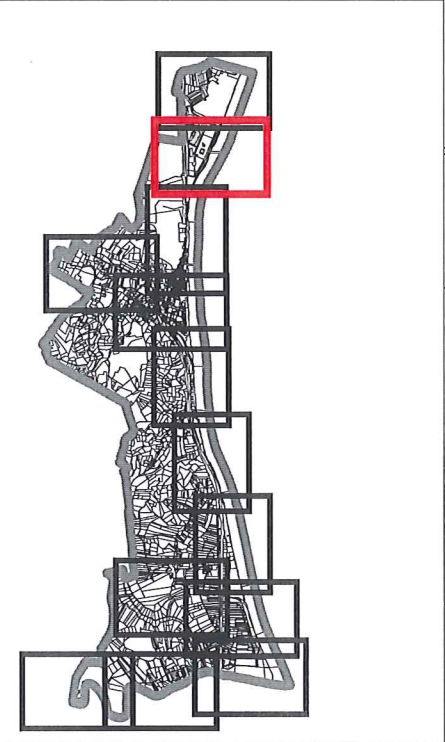


# Planche Zonage 2

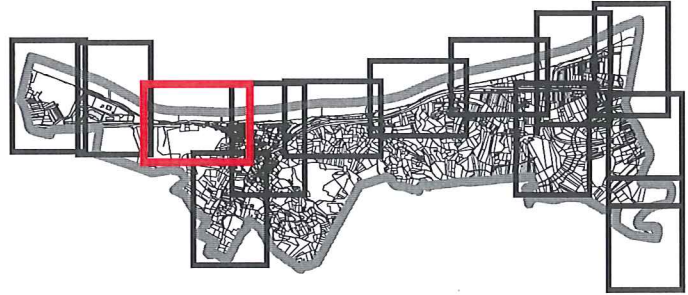


la grande île bayard

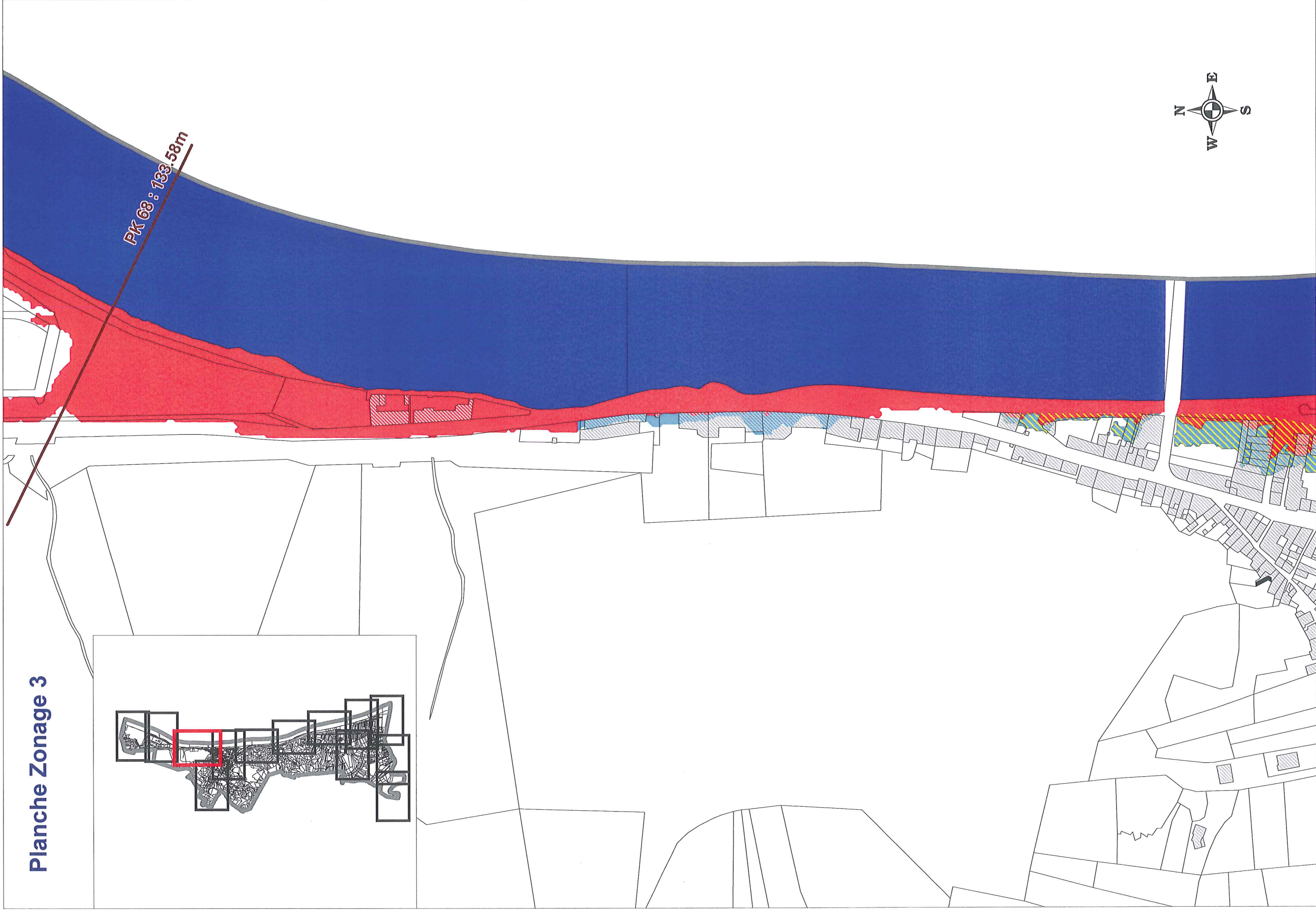
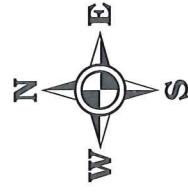
PK 68 : 133.58 m



**Planche Zonage 3**

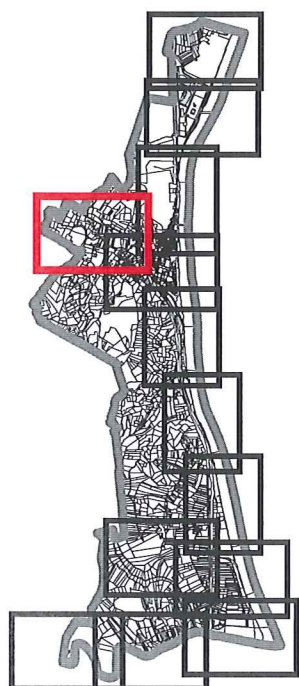
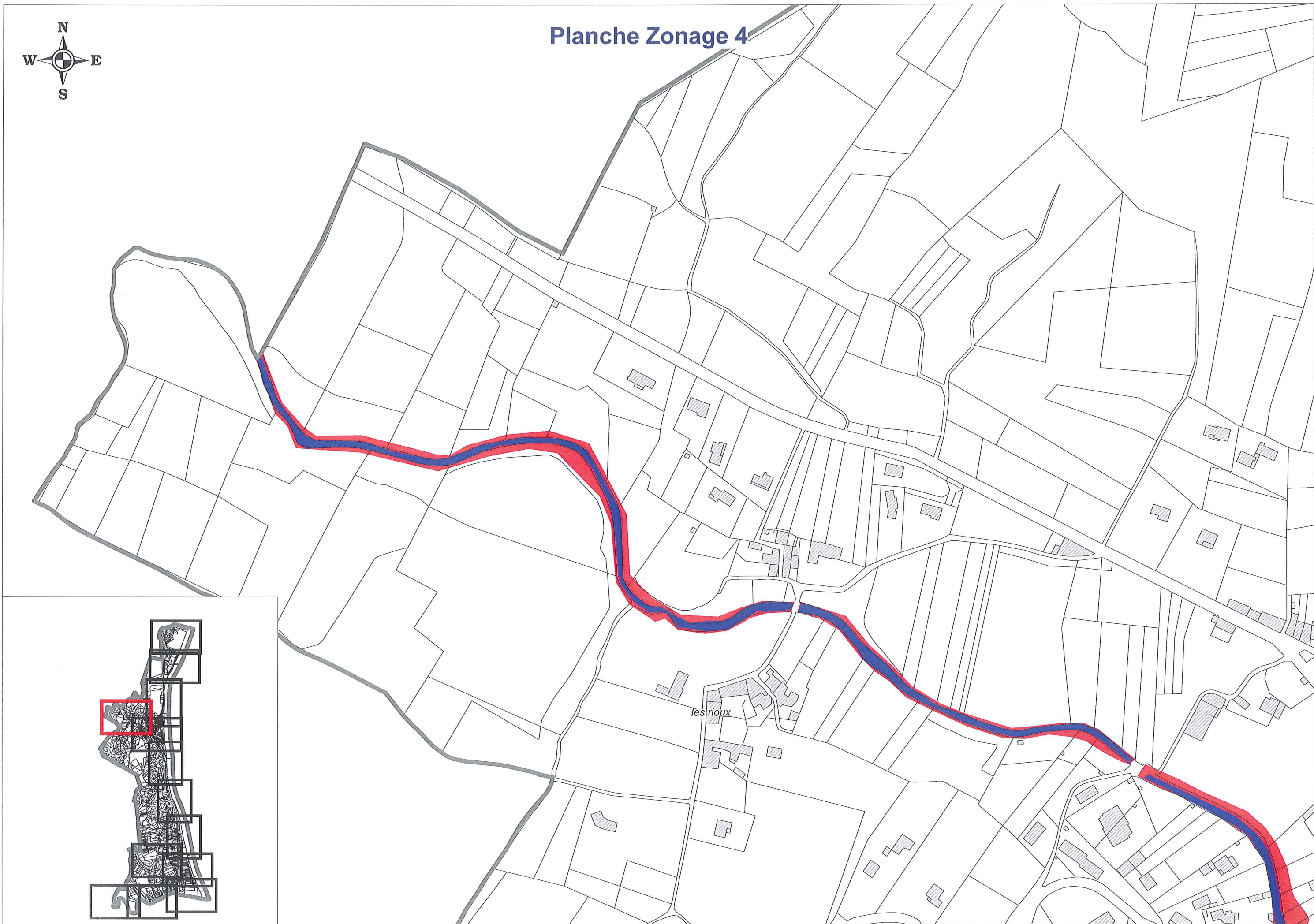


PK 68 : 133.58m



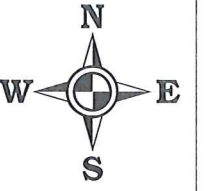


# Planche Zonage 4



les rioux

# Planche Zonage 5



le château morel

PK 69 : 132.85 m

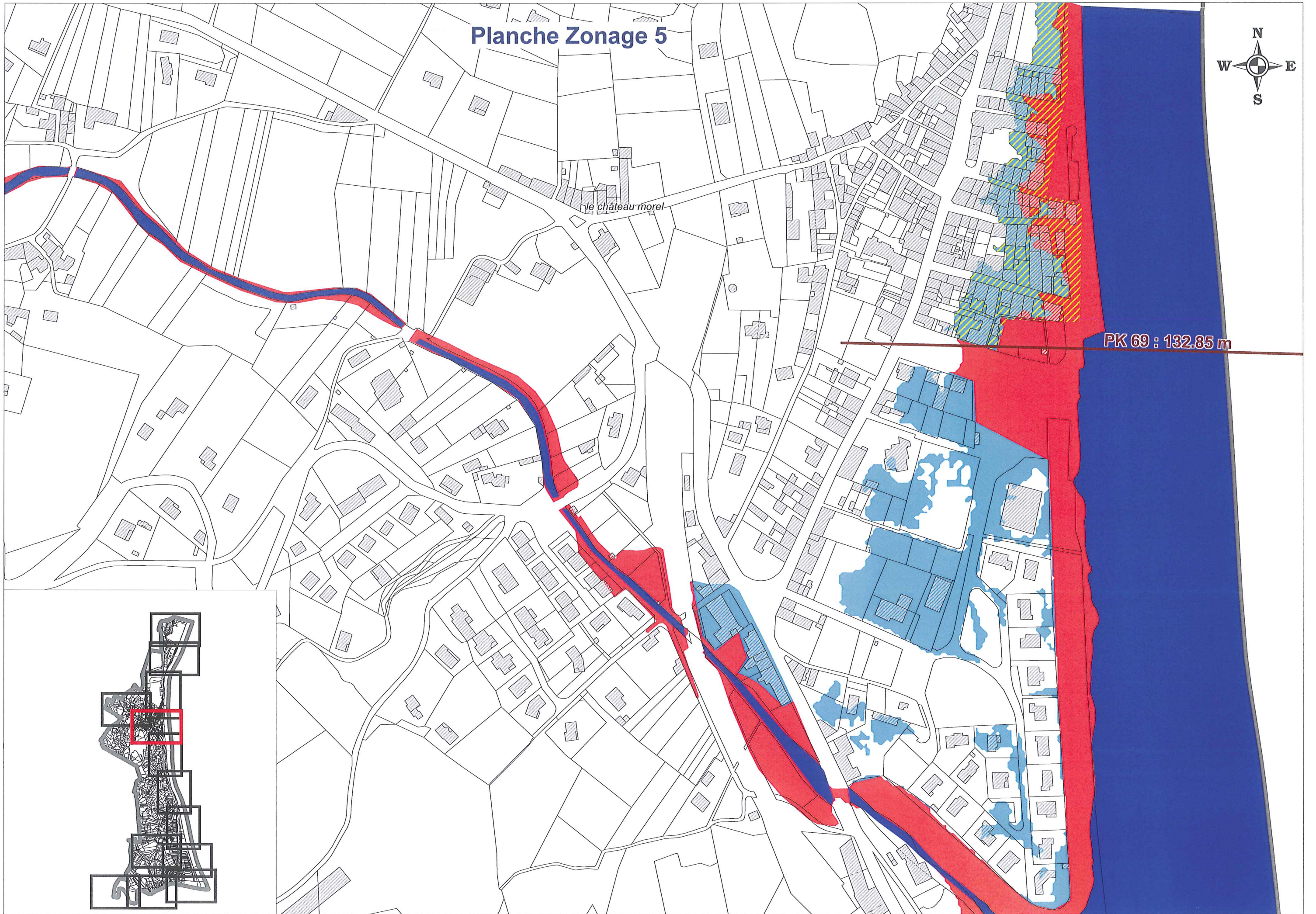
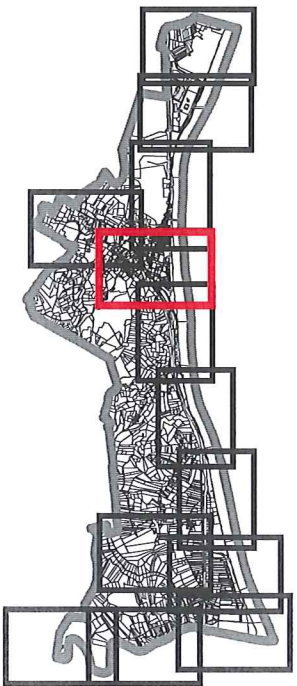
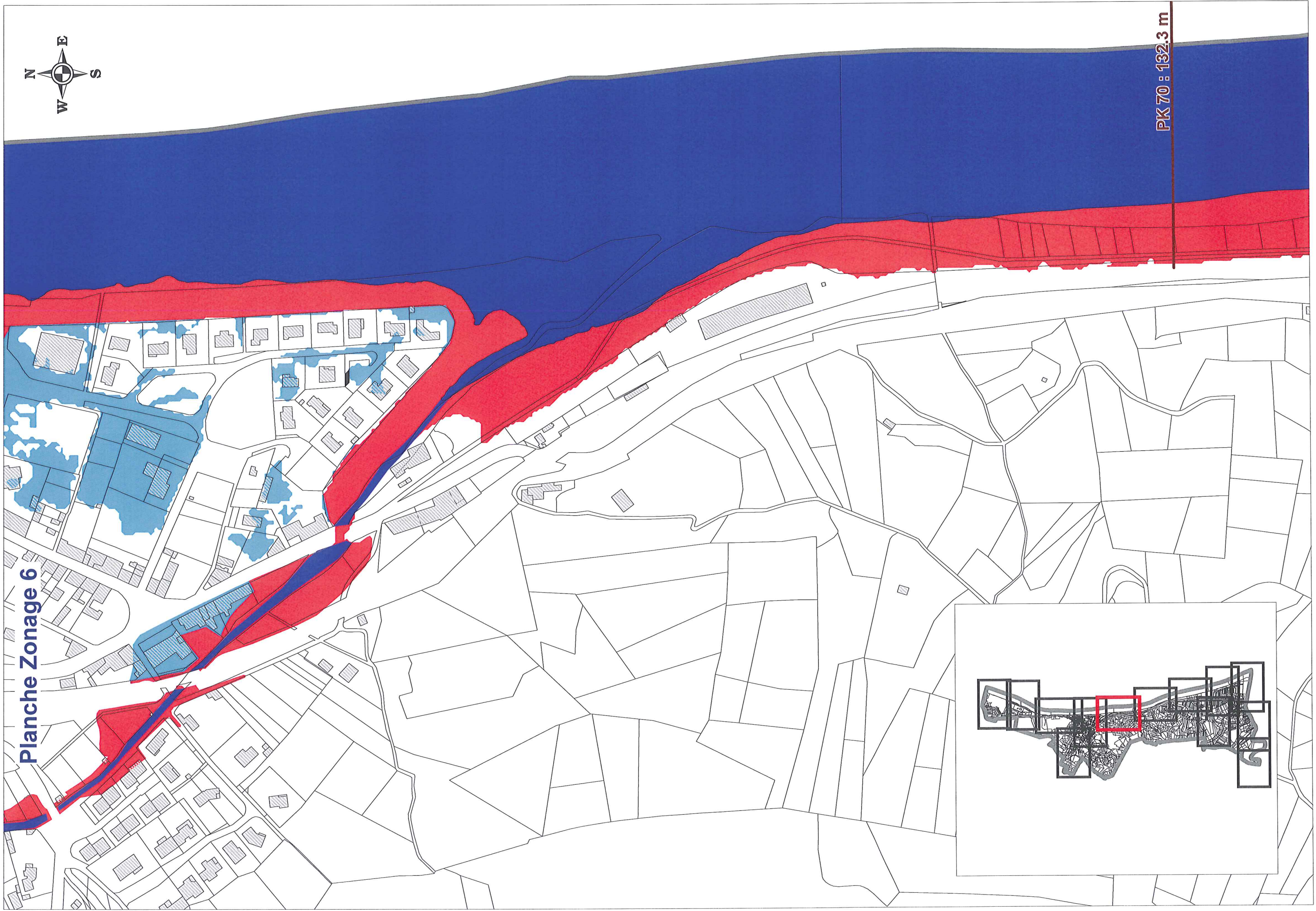




Planche Zonage 6

PK 70 : 132.3 m





PK 70 : 132,3 m

Planche Zonage 7



cueil

lesinables

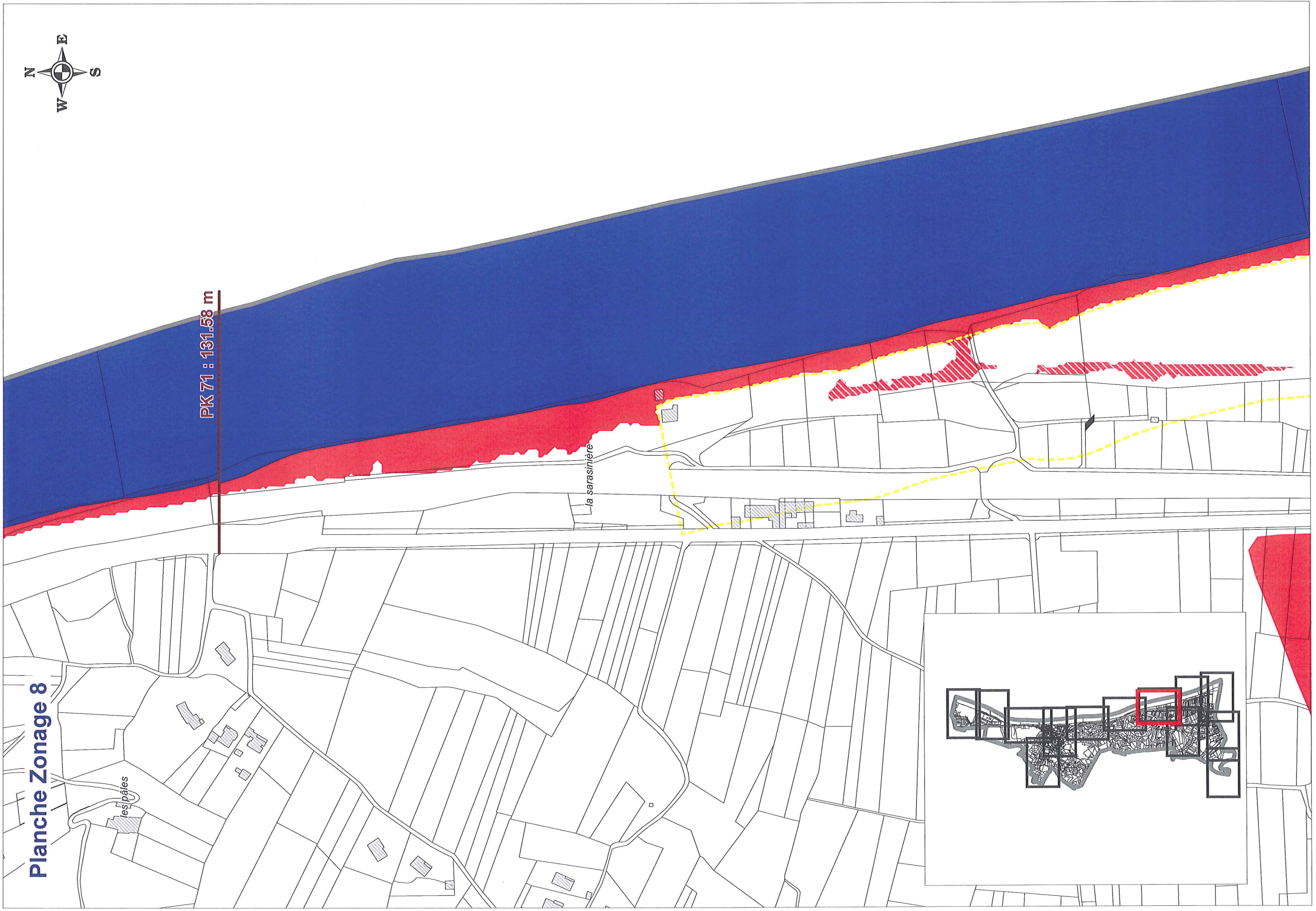


Planche Zonage 8

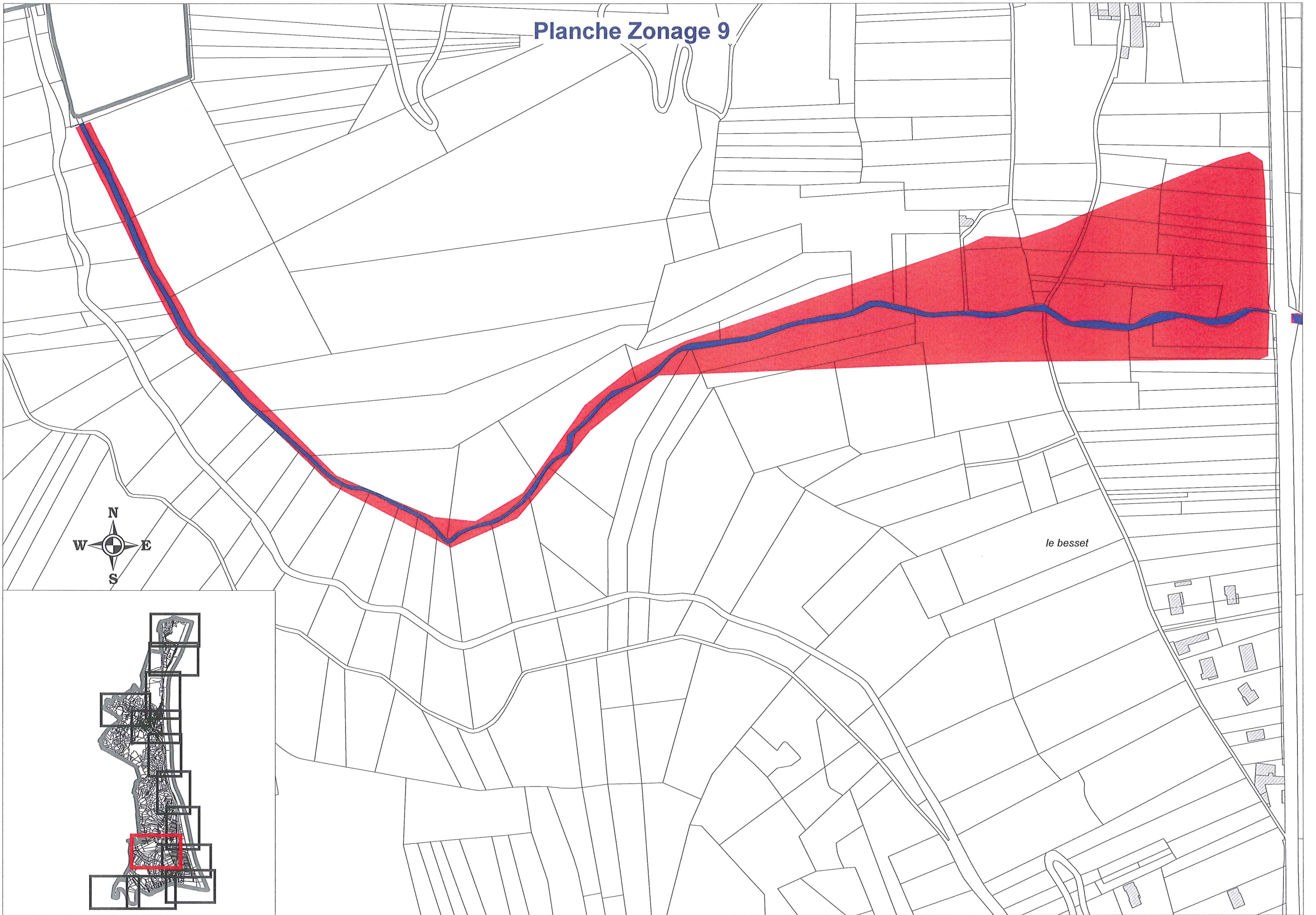
PK 71 : 131.58 m

la sarasinière

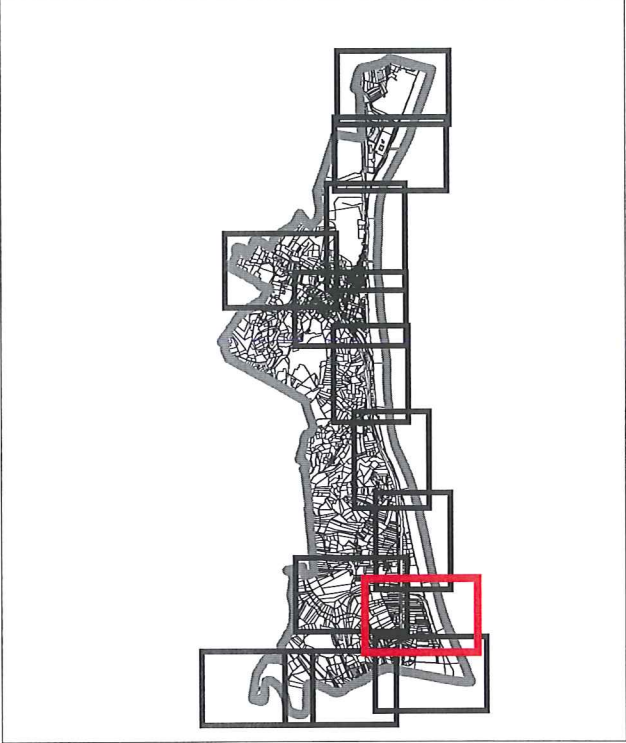
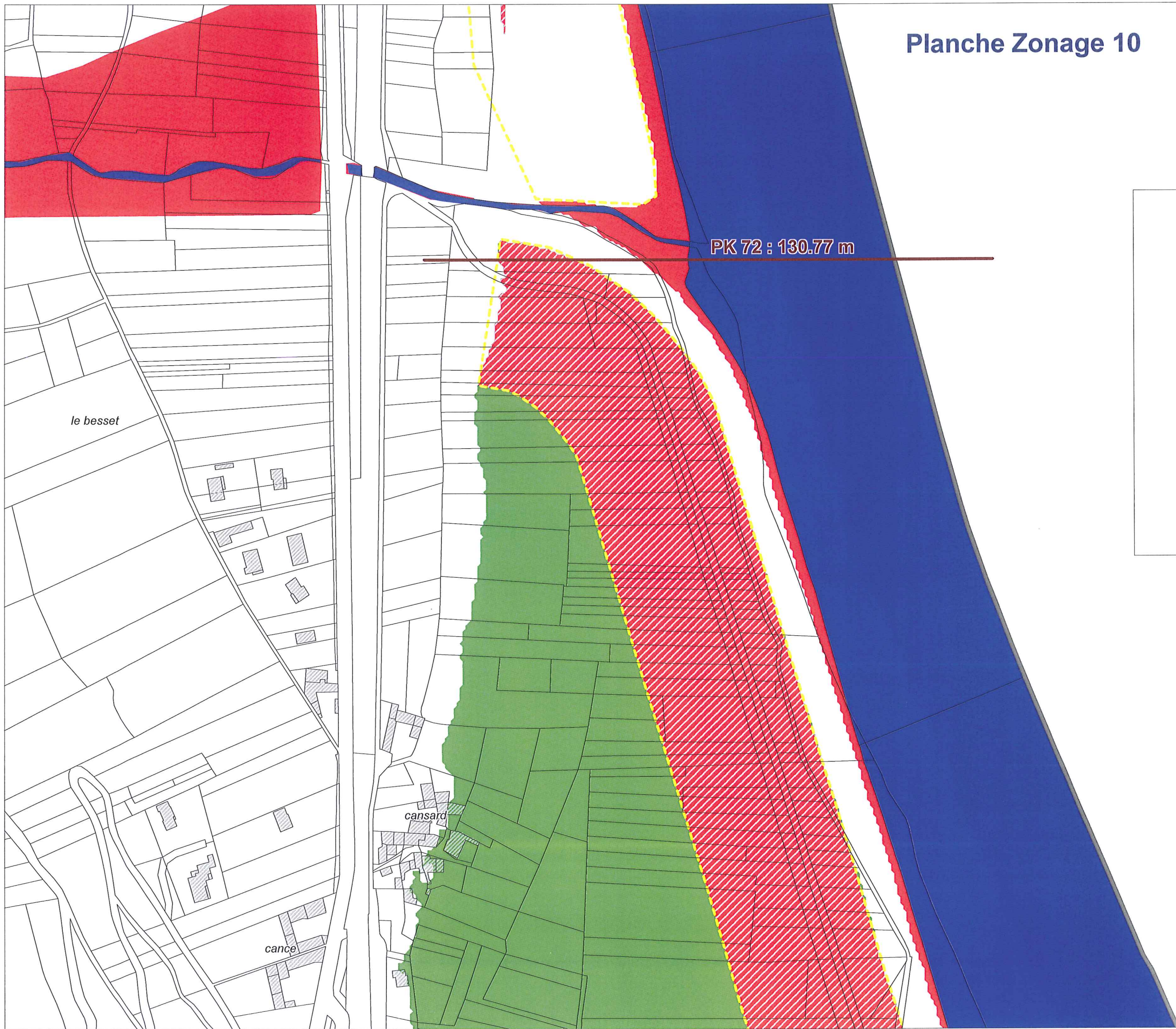
les pâtes



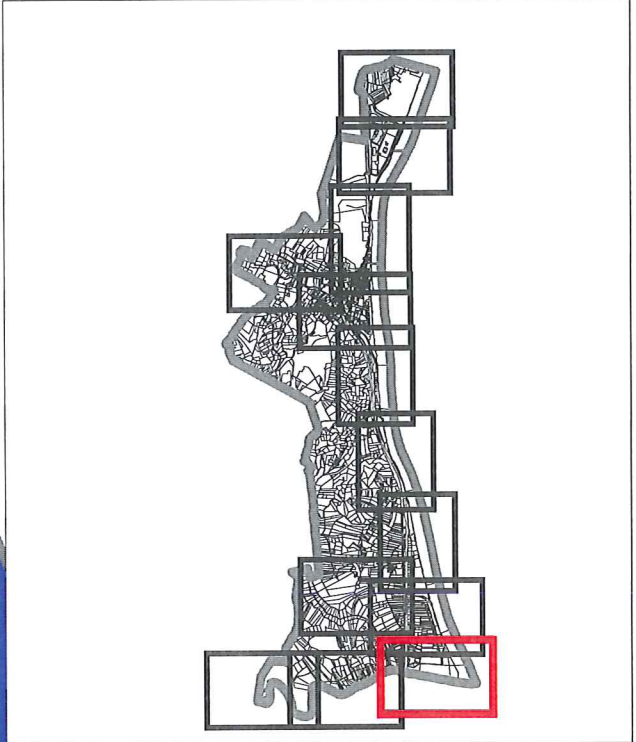
# Planche Zonage 9



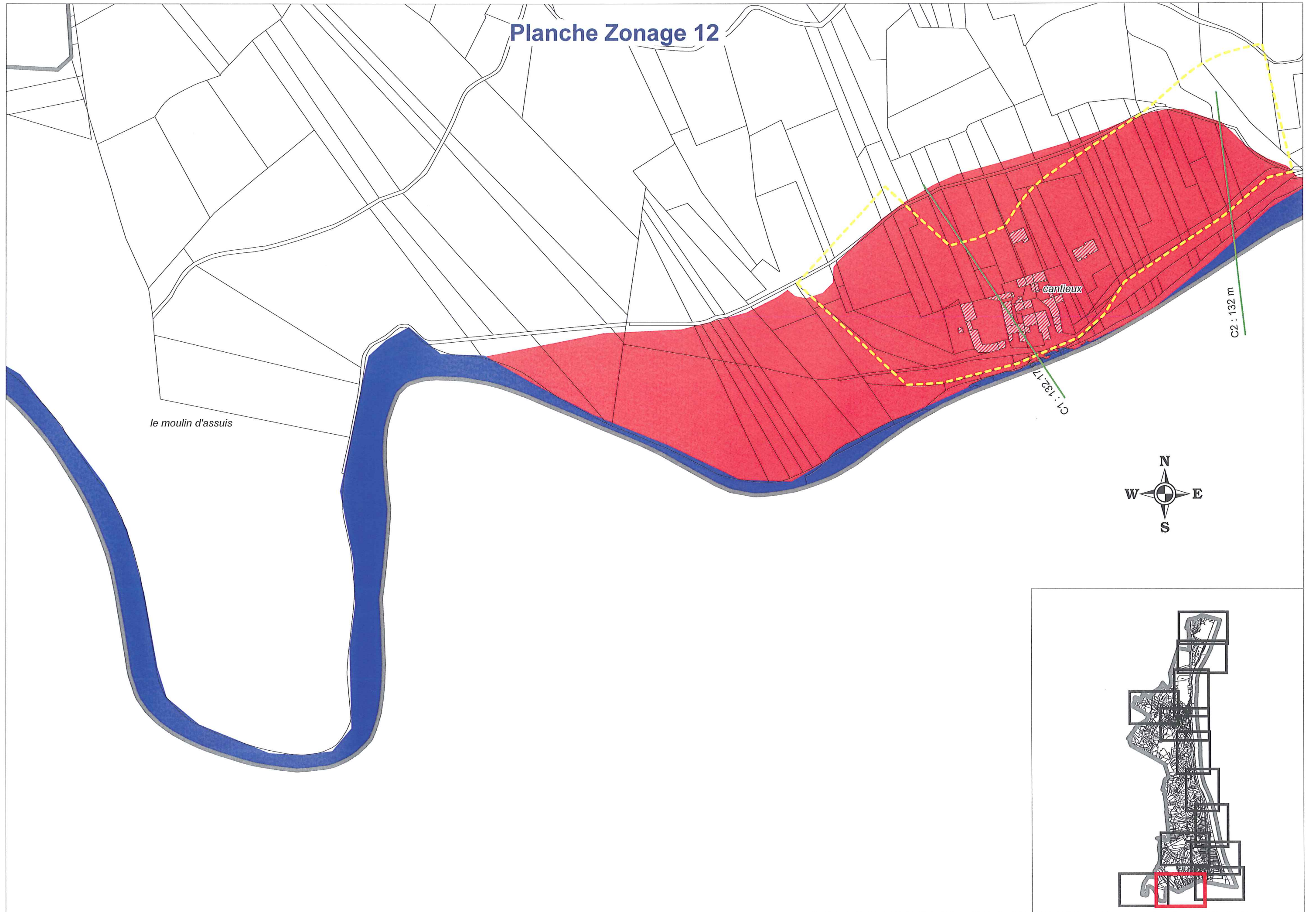
# Planche Zonage 10



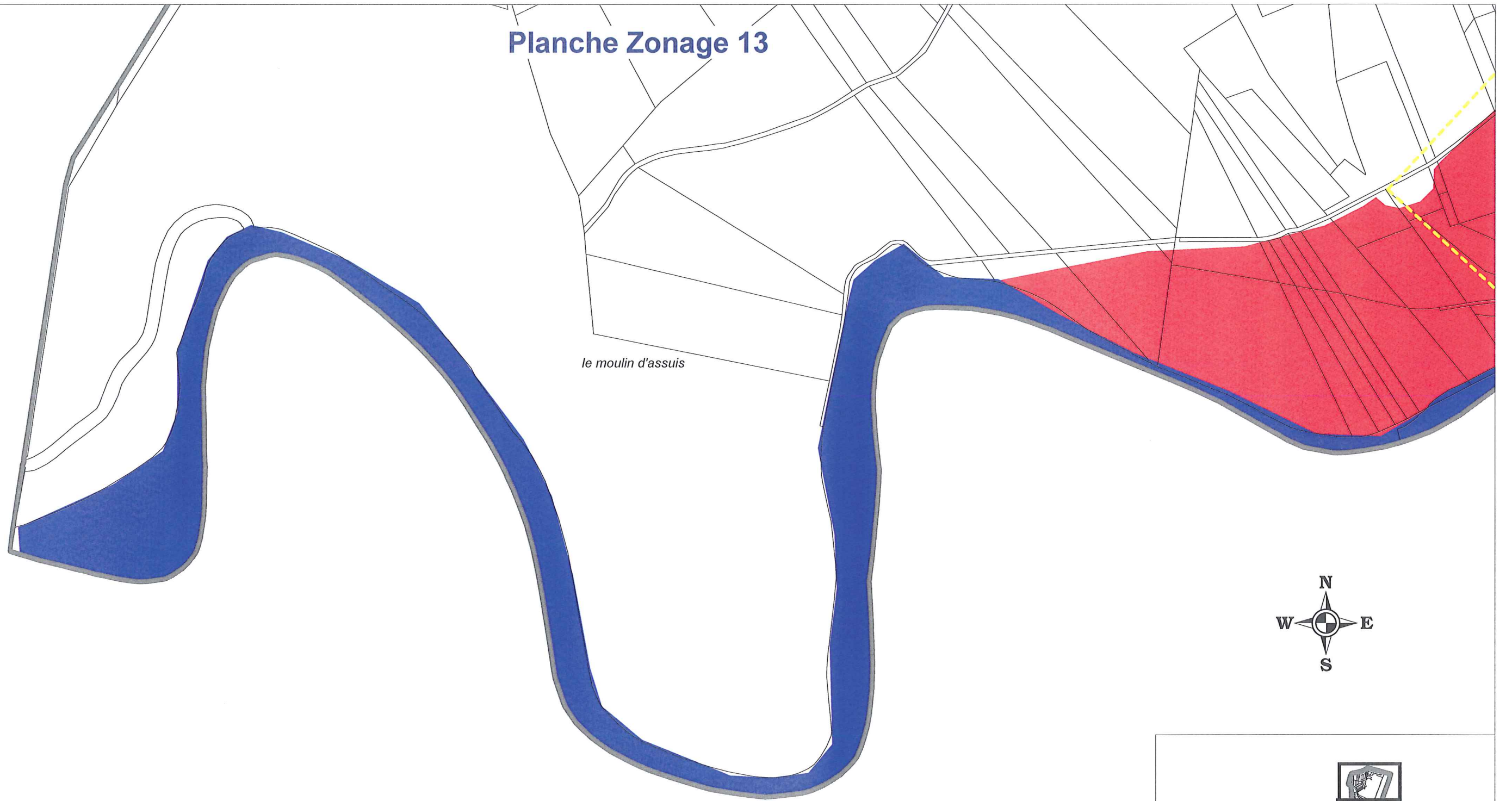
# Planche Zonage 11



# Planche Zonage 12



# Planche Zonage 13



*le moulin d'assuis*

